



RECON GRAPPLER

**NITTO**

FUELED BY ENTHUSIASTS

**2024**

NITTOTIRE.COM



**GRAPPLER TRUCKS**

**SUV/CUV**



Nitto Tire is fueled by enthusiasts and driven by passion and innovation. Growing by paving the way into emerging markets, listening and delivering tires that meet the exacting standards of enthusiasts.

Our sizing, tread patterns and compounds combine modern aesthetics with cutting-edge technology to create tires that appeal visually and impress with performance whether they're meant for street, strip, track or dirt. These memorable designs are the result of state-of-the-art development, quality engineering and rigorous testing procedures.

From our grassroots heritage to our industry-wide recognition for innovation and performance, we believe that overcoming the obstacles set in front of us makes us stronger. Producing tires that inspire driving confidence and consumer satisfaction across a wide variety of terrains is what propels us forward.

NITTOTIRE.COM

Follow us on:



CAR

COMPETITION

SIDE  
BY  
SIDE

# TABLE OF CONTENTS

## GRAPPLER TRUCKS

<b>Mud Grappler</b> <sup>®</sup> (Mud-Terrain) .....	04
<b>Trail Grappler</b> <sup>®</sup> M/T (Mud-Terrain) .....	06
<b>RIDGE GRAPPLER</b> <sup>®</sup> (Hybrid-Terrain) .....	08
<b>RECON GRAPPLER</b> <sup>®</sup> A/T (All-Terrain) .....	10
<b>EXO GRAPPLER</b> <sup>®</sup> AWT (All-Terrain) .....	12
<b>DURA GRAPPLER</b> <sup>®</sup> (Highway-Terrain) .....	14

## SUV/CUV

<b>NOMAD GRAPPLER</b> <sup>®</sup> (Crossover-Terrain) .....	16
<b>NT420</b> <sup>®</sup> (All-Season Truck and SUV) .....	18
<b>NT421</b> <sup>®</sup> (Premier All-Season CUV & SUV) .....	20

## CAR

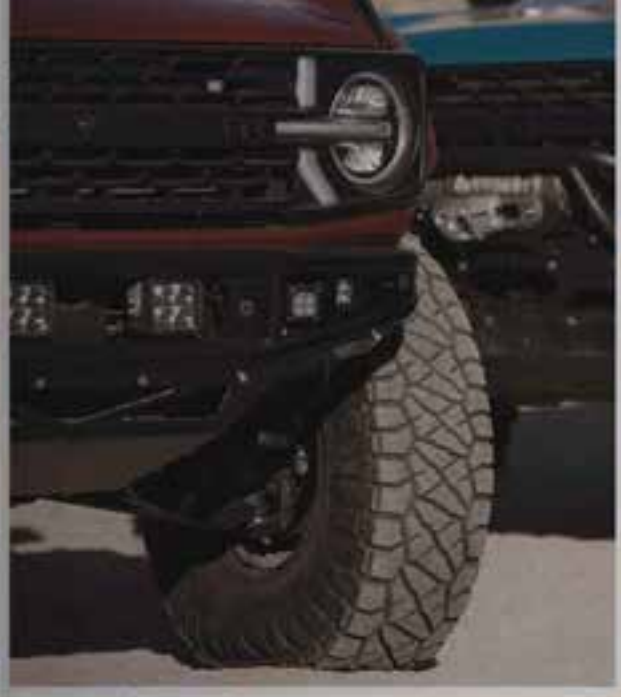
<b>NT05</b> <sup>®</sup> (Max Performance Summer) .....	22
<b>NT555</b> <sup>®</sup> G2 (Ultra High Performance Summer) .....	24
<b>INVO</b> <sup>®</sup> (Ultra High Performance Summer) .....	26
<b>Motivo</b> <sup>®</sup> (Ultra High Performance Summer) .....	28
<b>NEO</b> <sup>®</sup> GEN (Ultra High Performance All Season) .....	30

## COMPETITION

<b>NT01</b> <sup>®</sup> (Competition Road Course) .....	32
<b>NT555</b> <sup>®</sup> R II (Competition Drag) .....	34

## SIDE-BY-SIDE

<b>Trail Grappler</b> <sup>®</sup> SxS (Performance SxS) .....	36
Safety Warnings .....	41





# Mud Grappler®

EXTREME MUD TERRAIN LIGHT TRUCK TIRE



\*Ratings based on comparison to other Nitto product in the segment

PERFORMANCE RATED: **PQ**

TRACTION: **A** TEMPERATURE: **B**



## ■ HIGH VOID RATIO

The high void ratio between the tread blocks efficiently clears mud and dirt from the pattern to provide excellent traction in extreme terrain.

## ■ PUNCTURE RESISTANCE

The three-ply polyester sidewall construction and high strength steel belt tread package improve puncture resistance.

## ■ OFF-ROAD TRACTION

The tread blocks keep part of the lugs biting the ground at all times.

## ■ DUAL SIDEWALL DESIGNS

Each Grappler has two sidewall designs so you can choose how your tires look. On the Mud Grappler, one side has lizard skin sidewall lugs and the other has plain sidewall lugs.

## SIZE AND SPECIFICATIONS

*Mud Grapppler*  
EXTREME MUD TERRAIN LIGHT TRUCK TIRE

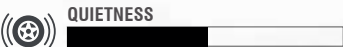
WHEEL DIAMETER	TIRE SIZE	STOCK NUMBER	TREAD DEPTH (1/32")	INFLATED DIMENSIONS		APPROVED RIM (Measuring Rim Width (in.))	MAXIMUM			WEIGHT (lbs.)	
				Overall Dia. (in.)	Overall Width (in.)		Load (lbs.)	@	Press (PSI)		
15"	33X13.50R15LT C	109Q	200650	21.0	33.07	13.94	9.5-(11.0)-12.0	2270	@	35	78.39
	35X14.50R15LT C	116Q	200580	21.0	34.80	14.57	10.0-(11.5)-13.0	2755	@	35	81.85
	38X15.50R15LT C	123P	200630	21.0	37.64	15.55	10.0-(12.5)-13.0	3415	@	35	108.40
16"	LT305/70R16 E	124/121P	201040	19.7	33.07	12.01	8.0-(9.0)-10.0	3525	@	65	66.87
	LT315/75R16 E	127/124P	201050	20.7	34.96	12.87	8.0-(8.5)-10.5	3860	@	65	80.74
	LT385/70R16 D	130Q	201060	21.0	37.72	15.35	10.0-(11.5)-13.0	4190	@	50	101.05
17"	33X12.50R17LT E	120Q	200760	21.0	32.95	12.68	8.5-(10.0)-11.0	3085	@	65	72.27
	35X12.50R17LT E	125P	200670	21.0	34.84	13.19	8.0-(10.0)-10.5	3640	@	65	79.05
	37X13.50R17LT E	131P	200600	21.0	37.05	14.57	9.0-(11.0)-11.5	4300	@	65	97.00
	40X13.50R17LT D	131Q	200770	21.0	39.72	14.57	9.0-(11.0)-11.5	4300	@	50	111.01
18"	33X12.50R18LT E	118Q	200690	21.0	32.95	12.68	8.5-(10.0)-11.0	2910	@	65	73.83
	35X12.50R18LT E	123Q	200550	21.0	35.04	13.39	8.5-(10.0)-11.0	3415	@	65	80.64
	37X13.50R18LT D	124P	200660	21.0	37.05	14.17	9.0-(11.0)-11.5	3525	@	50	90.48
	38X15.50R18LT D	128Q	200500	21.0	37.72	16.30	11.0-(12.5)-14.0	3970	@	50	99.04
20"	33X12.50R20LT E	114Q	200680	21.0	32.95	12.80	8.5-(10.0)-11.0	2600	@	65	71.03
	35X12.50R20LT E	121Q	200570	21.0	35.04	13.00	8.5-(10.0)-11.0	3195	@	65	77.45
	37X13.50R20LT E	127Q	200540	21.0	37.05	14.13	9.5-(11.0)-12.0	3860	@	65	87.66
	38X15.50R20LT D	125Q	200510	21.0	37.72	16.30	11.0-(12.5)-14.0	3640	@	50	100.70
	40X15.50R20LT D	130Q	200720	21.0	39.72	15.91	11.0-(12.5)-14.0	4190	@	50	108.23
22"	37X13.50R22LT E	123Q	200530	21.0	37.05	14.13	9.5-(11.0)-12.0	3415	@	65	84.05
	40X15.50R22LT D	127Q	200520	21.0	39.72	16.30	11.0-(12.5)-14.0	3860	@	50	111.38

Technical specs are subject to change without notice. LT tires with a "C" load range have a 6-ply rating. LT tires with a "D" load range have an 8-ply rating. LT Tires with an "E" load range have a 10-ply rating. LT Tires with an "F" load range have a 12-ply rating.



# Trail Grappler® M/T

MUD TERRAIN LIGHT TRUCK TIRE



\*Ratings based on comparison to other Nitto product in the segment

PERFORMANCE RATED: **PQ**

TRACTION: **A** TEMPERATURE: **B**



## ■ REDUCED ROAD NOISE

Advanced sound analysis equipment was used to systematically reduce the noises normally heard when driving on off-road tires.

## ■ MUD EVACUATION

The balanced void ratio efficiently removes mud and dirt from the tread to provide continuous off-road traction.

## ■ CENTRAL SIPING

Deep center sipes decrease hydroplaning and increases traction in wet conditions.

## ■ DURABILITY

The 3-ply sidewall with a high turn-up construction acts as an extra layer of reinforcement to increase puncture resistance.

\*Excluding 15" Trail Grappler® M/T Sizes.

## ■ DUAL SIDEWALL DESIGNS

Each Grappler has two sidewall designs so you can choose how your tires look. On the Trail Grappler, one side has stylized lettering with V-shaped sidewall lugs and the other has traditional lettering with flat buttresses.



# SIZE AND SPECIFICATIONS

**Trail Grappler M/T**  
MUD TERRAIN LIGHT TRUCK TIRE

WHEEL DIAMETER	TIRE SIZE	STOCK NUMBER	TREAD DEPTH (1/32")	INFLATED DIMENSIONS		APPROVED RIM (Measuring Rim Width (in.))	MAXIMUM		WEIGHT (lbs.)
				Overall Dia. (in.)	Overall Width (in.)		Load (lbs.)	Press (PSI)	
15"	33X12.50R15LT C	108Q	205850	21.0	33.03	12.99	8.0-(10.0)-10.5	2205 @ 35	71.47
	LT265/75R16 E	123/120P	205440	18.9	31.89	10.51	7.0-(7.5)-9.0	3415/3085 @ 80	61.69
	LT285/70R16 E	125/122P	205770	18.9	31.89	11.50	7.5-(8.5)-9.5	3640/3305 @ 80	62.91
16"	LT285/75R16 E	126/123Q	205840	19.1	33.03	11.73	7.5-(8.0)-9.5	3750/3415 @ 80	70.21
	LT315/75R16 E	127/124Q	205920	20.0	34.80	12.83	8.0-(8.5)-10.5	3860/3525 @ 65	82.37
	LT255/75R17 C	111/108Q	205890	18.3	32.17	10.28	6.5-(7.0)-8.5	2405/2205 @ 50	58.45
17"	LT265/70R17 E	121/118Q	205860	18.9	31.97	11.02	7.0-(8.0)-9.0	3195/2910 @ 80	60.81
	LT285/70R17 C	116/113Q	205450	18.9	32.99	11.50	7.5-(8.5)-9.5	2755/2535 @ 50	66.38
	LT285/70R17 E	121/118Q	205930	18.9	33.15	11.81	7.5-(8.5)-9.5	3195/2910 @ 80	66.39
	LT285/75R17 E	121/118Q	205950	18.9	34.09	11.57	7.5-(8.0)-9.5	3195/2910 @ 80	66.38
	LT295/70R17 E	121/118P	205710	19.4	33.54	11.97	7.5-(8.5)-10.0	3195/2910 @ 80	69.84
	LT315/70R17 D	121/118Q	205940	20.0	34.61	13.27	8.0-(9.5)-10.5	3195/2910 @ 50	76.83
	33X12.50R17LT E	120Q	374070	21.0	32.76	12.52	8.5-(10.0)-11.0	3085 @ 65	68.50
	35X11.50R17LT C	118Q	374080	21.0	34.76	11.42	7.5-(9.0)-10.0	2910 @ 50	72.60
	35X12.50R17LT E	121Q	205730	21.0	34.84	13.19	8.0-(10.0)-10.5	3195 @ 65	79.89
	37X12.50R17LT D	124Q	205880	21.0	36.85	13.43	8.0-(10.0)-10.5	3525 @ 50	87.30
	38X13.50R17LT D	121Q	374200	21.0	37.76	13.58	9.0-(11.0)-11.5	3195 @ 50	90.06
	40X13.50R17LT C	121P	205980	21.0	39.76	13.58	9.0-(11.0)-11.5	3195 @ 35	111.77
18"	LT275/70R18 E	125/122Q	205870	19.1	33.62	11.10	7.0-(8.0)-9.0	3640/3305 @ 80	65.67
	LT285/65R18 E	125/122Q	205740	18.9	32.83	11.93	8.5-(8.5)-10.0	3640/3305 @ 80	67.27
	LT285/75R18 E	129Q	206840	18.9	35.08	11.26	7.5-(8.0)-9.5	4080 @ 80	69.84
	LT295/70R18 E	129/126Q	205780	19.4	34.57	11.73	7.5-(8.5)-10.0	4080/3750 @ 80	72.83
	33X12.50R18LT F	122Q	374060	21.0	32.76	12.52	8.5-(10.0)-11.0	3305 @ 80	72.64
	35X11.50R18LT E	127Q	205530	21.0	34.76	11.42	7.5-(9.0)-10.0	3860 @ 80	72.19
	35X12.50R18LT E	123Q	205700	21.0	35.04	13.39	8.5-(10.0)-11.0	3415 @ 65	81.01
	37X12.50R18LT E	128Q	206610	21.0	36.77	12.52	8.0-(10.0)-10.5	3970 @ 65	89.95
20"	LT275/65R20 E	126/123Q	206600	19.1	34.33	10.98	8.0-(8.0)-9.5	3750/3415 @ 80	67.91
	LT285/55R20 E	122/119Q	206830	18.9	32.60	11.69	8.5-(9.0)-10.0	3305/3000 @ 80	63.18
	LT285/60R20 E	125/122Q	374210	18.9	33.70	11.50	8.5-(8.5)-10.0	3640/3305 @ 80	67.42
	LT295/55R20 E	123/120Q	205750	19.4	32.91	12.52	8.5-(9.5)-10.5	3415/3085 @ 80	70.02
	LT295/60R20 E	126/123Q	205910	19.4	34.45	12.13	8.5-(8.5)-10.5	3750/3415 @ 80	76.30
	LT295/65R20 E	129/126Q	205790	19.4	35.47	12.13	8.5-(8.5)-10.5	4080/3750 @ 80	75.29
	LT305/55R20 E	121/118Q	205760	19.4	33.39	12.60	9.0-(9.5)-11.0	3195/2910 @ 65	72.05
	LT325/60R20 E	126/123Q	205570	20.2	35.59	13.03	9.5-(9.5)-11.5	3750/3415 @ 65	83.01
	33X12.50R20LT E	114Q	205590	21.0	32.76	12.52	8.5-(10.0)-11.0	2600 @ 65	70.74
	35X11.50R20LT E	124Q	205540	21.0	34.76	11.42	8.0-(9.0)-10.5	3525 @ 80	70.41
	35X12.50R20LT E	121Q	205720	21.0	35.04	13.39	8.5-(10.0)-11.0	3195 @ 65	78.44
	35X12.50R20LT F	125Q	374120	21.0	34.76	12.52	8.5-(10.0)-11.0	3640 @ 80	76.83
	37X11.50R20LT E	128Q	205580	21.0	36.77	11.42	7.5-(9.0)-10.0	3970 @ 80	76.98
	37X12.50R20LT E	126Q	205800	21.0	36.77	12.99	8.5-(10.0)-11.0	3750 @ 65	85.84
	37X13.50R20LT E	127Q	205420	21.0	36.77	13.58	9.5-(11.0)-12.0	3860 @ 65	88.03
	38X13.50R20LT E	128Q	374000	21.0	37.76	13.58	9.5-(11.0)-12.0	3970 @ 65	91.23
38X15.50R20LT D	125Q	205430	21.0	37.76	15.35	11.0-(12.5)-14.0	3640 @ 50	95.64	
40X15.50R20LT D	128Q	206850	21.0	39.76	15.35	11.0-(12.5)-14.0	3970 @ 50	106.33	
42X13.50R20LT C	124Q	374160	21.0	41.77	13.58	9.0-(11.0)-11.5	3525 @ 35	108.78	
22"	LT285/55R22 E	124/121Q	205900	18.9	34.53	12.05	8.0-(9.0)-10.0	3525/3195 @ 80	69.58
	LT325/50R22 E	122Q	205830	20.0	34.92	13.19	9.5-(10.0)-11.5	3305 @ 65	75.27
	LT355/40R22 F	122Q	374020	18.9	33.43	14.41	12.0-(12.5)-14.0	3305 @ 80	79.70
	LT375/45R22 F	128Q	374010	19.5	35.55	14.96	12.0-(12.5)-14.0	3970 @ 80	89.36
	33X12.50R22LT E	109Q	205600	18.9	32.76	12.52	8.5-(10.0)-11.0	2270 @ 65	64.37
	35X12.50R22LT E	117Q	205610	21.0	34.76	12.52	8.5-(10.0)-11.0	2835 @ 65	72.31
	37X13.50R22LT E	123Q	205810	21.0	37.05	13.78	9.5-(11.0)-12.0	3415 @ 65	83.57
	38X13.50R22LT E	126Q	205550	21.0	37.76	13.58	9.5-(11.0)-12.0	3750 @ 65	89.11
	40X15.50R22LT E	128Q	205560	21.0	39.76	15.35	11.0-(12.5)-14.0	3970 @ 65	105.72
	42X15.50R22LT C	124Q	374220	21.0	41.77	15.55	11.0-(12.5)-14.0	3525 @ 35	115.59
24"	LT355/40R24 F	123Q	374140	18.9	35.43	14.21	12.0-(12.5)-14.0	3415 @ 80	84.04
	LT375/40R24 F	126Q	374040	19.5	36.06	14.96	12.5-(13.5)-15.0	3750 @ 80	89.97
	37X13.50R24LT F	124Q	374150	21.0	36.77	13.58	9.5-(11.0)-12.0	3525 @ 80	86.99
	38X13.50R24LT E	123Q	205820	21.0	37.72	13.82	9.5-(11.0)-12.0	3415 @ 65	90.89
	40X15.50R24LT E	128P	374050	21.0	39.76	15.35	11.0-(12.5)-14.0	3970 @ 65	104.45
	42X15.50R24LT C	122Q	374170	21.0	41.77	15.55	11.0-(12.5)-14.0	3305 @ 35	110.80
26"	40X15.50R26LT E	126Q	374100	21.0	39.76	15.55	11.0-(12.5)-14.0	3750 @ 65	104.32
	42X15.50R26LT D	126Q	374130	21.0	41.77	15.55	11.0-(12.5)-14.0	3750 @ 50	109.79

Technical specs are subject to change without notice. LT tires with a "C" load range have a 6-ply rating. LT tires with a "D" load range have an 8-ply rating. LT Tires with an "E" load range have a 10-ply rating. LT Tires with an "F" load range have a 12-ply rating.



# RIDGE GRAPPLER®

HYBRID TERRAIN LIGHT TRUCK TIRE



\*Ratings based on comparison to other Nitto product in the segment

PERFORMANCE RATED: **QST**    UTQG TREADWEAR METRIC SIZES ONLY: **500**    TRACTION: **A**    TEMPERATURE: **B**

### ■ VARIABLE PITCH TREAD PATTERN

Advanced sound equipment was used to create a pattern that provides a quiet and smooth highway ride.

### ■ ALTERNATING SHOULDER GROOVES

Shoulder grooves are arranged in alternating widths and lengths to clear mud and maintain traction. Lateral Z grooves are set in a zig-zag pattern to provide biting edges for traction.

### ■ STEP BLOCK EDGES

The alternating tapered edges and step block edges both provide additional biting edges for more traction.

### ■ STAGGERED SHOULDER LUGS

Provides traction in off-road environments.

### ■ STONE EJECTORS

Protects the bottom of groove from stone drilling.

### ■ DUAL SIDEWALL DESIGNS

Like all Grapplers, the Ridge Grappler features two bold sidewall designs. One side features a more traditional pattern while the other side features a new, aggressive block design.

# SIZE AND SPECIFICATIONS

**RIDGE GRAPPLER®**  
 HYBRID TERRAIN LIGHT TRUCK TIRE

## WHEEL DIAMETER

## TIRE SIZE

## STOCK NUMBER

## TREAD DEPTH (1/32")

## INFLATED DIMENSIONS Overall Dia. (in.) | Overall Width (in.)

## APPROVED RIM (Measuring Rim) Width (in.)

## MAXIMUM Load (lbs.) @ Press (PSI)

## WEIGHT (lbs.)

### 16"

265/70R16 XL	116T	217930	13.5	30.63	10.71	7.0-(8.0)-9.0	2756	@	50	46.74
265/75R16	116T	217890	13.5	31.65	10.51	7.0-(7.5)-9.0	2756	@	44	48.94
LT265/75R16 E	123/120Q	217650	16.4	31.65	10.51	7.0-(7.5)-9.0	3415/3085	@	80	56.37
LT285/75R16 E	126/123Q	217620	16.4	32.83	11.26	7.5-(8.0)-9.5	3750/3415	@	80	61.66
LT295/75R16 E	128/125Q	217950	16.4	33.39	11.57	7.5-(8.0)-10.0	3970/3640	@	80	68.34
LT305/70R16 E	124/121Q	217910	16.4	32.83	12.24	8.0-(9.0)-10.0	3525/3195	@	65	68.12
LT315/75R16 E	127/124Q	217870	16.4	34.57	12.32	8.0-(8.5)-10.5	3860/3525	@	65	72.95

### 17"

245/65R17 XL	111T	218860	13.5	29.53	9.76	7.0-(7.0)-8.5	2403	@	50	36.86
LT255/80R17 E	121/118Q	217380	16.4	33.31	10.04	6.5-(7.0)-8.5	3195/2910	@	80	54.96
265/65R17 XL	116T	217810	13.5	30.55	10.71	7.5-(8.0)-9.5	2756	@	50	40.21
265/70R17	115T	217940	13.5	31.65	10.71	7.0-(8.0)-9.0	2679	@	44	43.41
LT265/70R17 E	121/118Q	217100	16.4	31.65	10.71	7.0-(8.0)-9.0	3195/2910	@	80	54.48
LT275/70R17 E	121/118Q	217990	16.5	32.20	10.98	7.0-(8.0)-9.0	3195/2910	@	80	54.04
285/70R17	116Q	217710	13.5	32.76	11.50	7.5-(8.5)-9.5	2756	@	44	48.74
LT285/70R17 C	116/113Q	217010	16.4	32.76	11.50	7.5-(8.5)-9.5	2755/2535	@	50	57.89
LT285/70R17 E	121/118Q	217000	16.4	32.76	11.50	7.5-(8.5)-9.5	3195/2910	@	80	57.89
LT285/75R17 C	117/114Q	217210	16.4	33.86	11.26	7.5-(8.0)-9.5	2835/2600	@	50	65.08
LT285/75R17 E	121/118Q	217200	16.4	33.86	11.26	7.5-(8.0)-9.5	3195/2910	@	80	64.40
LT295/70R17 E	121/118Q	217070	16.4	33.31	11.77	7.5-(8.5)-10.0	3195/2910	@	80	64.72
LT305/70R17 E	121/118Q	217080	16.4	33.86	12.24	8.0-(9.0)-10.0	3195/2910	@	65	68.57
LT315/70R17 E	121/118Q	217530	16.4	34.41	12.72	8.0-(9.5)-10.5	3195/2910	@	65	70.83
33X12.50R17LT E	120Q	217180	18.3	32.76	12.52	8.5-(10.0)-11.0	3085	@	65	69.32
35X11.50R17LT E	128Q	218850	18.3	34.76	11.42	7.5-(9.0)-10.0	3970	@	80	66.29
35X12.50R17LT E	121Q	217020	18.3	34.76	12.52	8.0-(10.0)-10.5	3195	@	65	75.45
37X12.50R17LT D	124Q	217050	18.3	36.77	12.52	8.0-(10.0)-10.5	3525	@	50	81.48
37X13.50R17LT E	121Q	217450	18.3	36.77	13.58	9.0-(11.0)-11.5	3195	@	65	87.04
38X12.50R17LT C	118Q	217980	18.3	37.76	12.52	8.0-(10.0)-10.5	2910	@	35	81.90

### 18"

255/55R18 XL	109T	217850	13.5	29.02	10.43	7.0-(8.0)-9.0	2271	@	50	39.35
255/70R18 XL	116T	217690	13.5	32.09	10.24	6.5-(7.5)-8.5	2756	@	50	42.77
265/60R18 XL	114S	217700	13.5	30.51	10.71	7.5-(8.0)-9.5	2601	@	50	41.47
265/65R18 XL	116T	217820	13.5	31.54	10.71	7.5-(8.0)-9.5	2756	@	50	43.12
LT265/65R18 E	122/119Q	217470	16.4	31.77	10.71	8.0-(8.0)-9.5	3305/3000	@	80	52.78
265/70R18	116T	218940	13.5	32.64	10.71	7.0-(8.0)-9.0	2756	@	44	45.30
LT265/70R18 E	124/121Q	217480	16.4	32.87	10.71	7.0-(8.0)-9.0	3525/3195	@	80	55.40
275/65R18 XL	116T	217730	13.5	32.09	10.98	7.5-(8.0)-9.5	2756	@	50	45.04
LT275/65R18 E	123/120Q	217090	16.4	32.09	10.98	8.0-(8.0)-9.5	3415/3085	@	80	56.36
LT275/70R18 E	125/122Q	217160	16.4	33.19	10.98	7.0-(8.0)-9.0	3640/3305	@	80	58.47
285/60R18 XL	120T	217800	13.5	31.46	11.50	8.0-(8.5)-10.0	3086	@	50	47.64
LT285/60R18 E	122/119Q	217510	16.4	31.69	11.50	8.5-(8.5)-10.0	3305/3000	@	80	57.17
LT285/65R18 E	125/122Q	217110	16.4	32.56	11.50	8.5-(8.5)-10.0	3640/3305	@	80	58.33
LT285/70R18 E	127/124Q	217370	16.4	33.98	11.50	7.5-(8.5)-9.5	3860/3525	@	80	59.94
LT285/75R18 E	129/126Q	217560	16.4	35.08	11.26	7.5-(8.0)-9.5	4080/3750	@	80	69.45
LT295/70R18 E	129/126Q	217120	16.4	34.29	11.77	7.5-(8.5)-10.0	4080/3750	@	80	69.44
305/60R18	116Q	217720	13.5	32.40	12.24	8.5-(9.0)-11.0	2756	@	44	50.55
LT305/65R18 F	128/125Q	217520	16.4	33.58	12.24	9.0-(9.0)-11.0	3970/3640	@	80	68.43
LT325/60R18 E	124/121Q	217540	16.4	33.35	13.03	9.5-(9.5)-11.5	3525/3195	@	65	66.29
LT325/65R18 E	127/124Q	217550	16.4	34.61	13.03	9.5-(9.5)-11.5	3860/3525	@	65	74.23
33X12.50R18LT F	122Q	217190	18.3	32.76	12.52	8.5-(10.0)-11.0	3305	@	80	69.68
35X12.50R18LT F	128Q	217130	18.3	34.76	12.52	8.5-(10.0)-11.0	3970	@	80	74.11
37X11.50R18LT D	127Q	217660	18.3	36.77	11.42	7.5-(9.0)-10.0	3860	@	65	76.63
37X12.50R18LT E	128Q	217260	18.3	36.77	12.52	8.0-(10.0)-10.5	3970	@	65	83.39
37X13.50R18LT D	124Q	217390	18.3	36.77	13.58	9.0-(11.0)-11.5	3525	@	50	89.02

### 20"

265/50R20 XL	111T	217780	13.5	30.47	10.91	7.5-(8.5)-9.5	2403	@	50	43.12
265/60R20	112T	218890	13.5	32.52	10.71	7.5-(8.0)-9.5	2469	@	44	44.51
LT265/60R20 E	121/118Q	217460	16.4	32.76	10.71	8.0-(8.0)-9.5	3195/2910	@	80	56.04
275/55R20 XL	117T	218970	13.5	31.89	11.18	7.5-(8.5)-9.5	2833	@	50	47.55
LT275/55R20 E	120/117Q	217330	16.4	32.13	11.18	8.0-(8.5)-9.5	3085/2835	@	80	53.13
275/60R20 XL	116T	217630	13.5	32.99	10.98	7.5-(8.0)-9.5	2756	@	50	47.22
LT275/60R20 E	123/120Q	217320	16.4	33.23	10.98	8.0-(8.0)-9.5	3415/3085	@	80	59.08
275/65R20	116T	219010	13.5	34.09	10.98	7.5-(8.0)-9.5	2756	@	44	51.91
LT275/65R20 E	126/123Q	217150	16.4	34.09	10.98	8.0-(8.0)-9.5	3750/3415	@	80	60.85
285/50R20 XL	116Q	217770	13.5	31.26	11.69	8.0-(9.0)-10.0	2756	@	50	45.26
LT285/55R20 E	122/119Q	217340	16.4	32.60	11.69	8.5-(9.0)-10.0	3305/3000	@	80	61.07
LT285/60R20 E	125/122Q	217400	16.4	33.70	11.50	8.5-(8.5)-10.0	3640/3305	@	80	61.62
LT285/65R20 E	127/124Q	217350	16.4	34.80	11.50	8.5-(8.5)-10.0	3860/3525	@	80	63.71
LT295/55R20 E	123/120Q	217220	16.4	32.76	12.17	8.5-(9.5)-10.5	3415/3085	@	80	62.29
LT295/60R20 E	126/123Q	217170	16.4	33.94	11.77	8.5-(8.5)-10.5	3750/3415	@	80	65.88
LT295/65R20 E	129/126Q	217230	16.4	35.12	11.77	8.5-(8.5)-10.5	4080/3750	@	80	69.41
305/50R20 XL	120Q	217790	13.5	32.05	12.44	8.5-(9.5)-11.0	3086	@	50	49.87
305/55R20	116Q	217860	13.5	33.23	12.44	8.5-(9.5)-11.0	2756	@	44	51.57
LT305/55R20 F	125/122Q	217060	16.4	33.23	12.44	9.0-(9.5)-11.0	3640/3305	@	80	63.85
LT325/60R20 E	126/123Q	217440	16.4	35.35	13.03	9.5-(9.5)-11.5	3750/3415	@	65	69.82
33X11.50R20LT E	118Q	217310	18.3	32.76	11.42	8.0-(9.0)-10.5	2910	@	80	66.36
33X12.50R20LT F	119Q	217140	18.3	32.76	12.52	8.5-(10.0)-11.0	3000	@	80	69.52
35X11.50R20LT E	124Q	217290	18.3	34.76	11.42	8.0-(9.0)-10.5	3525	@	80	71.40
35X12.50R20LT F	125Q	217040	18.3	34.76	12.52	8.5-(10.0)-11.0	3640	@	80	70.55
35X13.50R20LT F	126Q	217240	18.3	34.76	13.58	9.5-(11.0)-12.0	3750	@	80	78.40
37X11.50R20LT E	128Q	218510	18.3	36.54	11.42	7.5-(9.0)-10.0	3970	@	80	72.00
37X12.50R20LT E	126Q	217030	18.3	36.77	12.52	8.5-(10.0)-11.0	3750	@	65	81.06
37X13.50R20LT E	127Q	217410	18.3	36.77	13.58	9.5-(11.0)-12.0	3860	@	65	85.58
38X13.50R20LT E	128Q	217430	18.3	37.76	13.58	9.5-(11.0)-12.0	3970	@	65	89.29

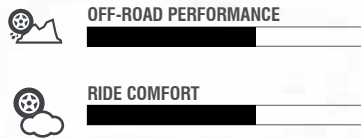
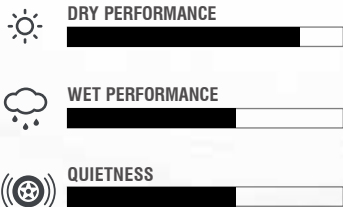
### 22"

275/50R22 XL	115T	218870	13.5	32.87	11.18	7.5-(8.5)-9.5	2679	@	50	45.39
285/45R22 XL	114Q	217750	13.5	32.09	11.22	9.0-(9.5)-10.5	2601	@	50	44.73
LT285/50R22 E	121/118Q	217490	16.4	33.50	11.69	8.5-(9.0)-10.0	3195/2910	@	80	61.99
LT285/55R22 E	124/121Q	217500	16.4	34.61	11.69	8.5-(9.0)-10.0	3525/3195	@	80	62.96
LT295/50R22 E	122/119Q	218490	16.5	33.66	12.17	8.5-(9.5)-10.5	3305/3000	@	80	64.82
LT295/55R22 E	125/122Q	218480	16.5	34.76	12.17	8.0-(9.5)-10.5	3640/3305	@	80	67.13
305/45R22 XL	118Q	217740	13.5	32.80	11.93	9.5-(10.0)-11.5	2910	@	50	47.53
LT315/45R22 F	121/118Q	218500	16.5	33.19	12.40	10.0-(10.5)-12.0	3195/2910	@	80	67.20
LT325/50R22 F	127Q	217570	16.4	34.84	13.23	9.5-(10.0)-11.5	3860	@	80	78.26
33X12.50R22LT F	114Q	217270	16.4	32.76	12.52	8.5-(10.0)-11.0	2600	@	80	62.76
35X12.50R22LT F	121Q	217250	18.3	34.76	12.52	8.5-(10.0)-11.0	3195	@	80	70.33
37X12.50R22LT F	127Q	217280	18.3	36.77	12.52	8.5-(10.0)-11.0	3860	@	80	75.88
37X13.50R22LT F	128Q	217420	18.3	36.77	13.58	9.5-(11.0)-12.0	3970	@		



# RECON GRAPPLER® A/T

ALL-TERRAIN LIGHT TRUCK TIRE



\*Ratings based on comparison to other Nitto product in the segment

PERFORMANCE RATED:	<b>ST</b>	UTQG TREADWEAR: <b>600</b>	TRACTION: <b>A</b>	TEMPERATURE: <b>B</b>
PERFORMANCE RATED:	<b>H</b>	UTQG TREADWEAR: <b>600</b>	TRACTION: <b>A</b>	TEMPERATURE: <b>A</b>

**LIMITED TREADWEAR WARRANTY** **55K & 65K**  
FOR LT METRIC SIZES AND FLotation SIZES FOR HARD METRIC SIZES

\*Please refer to Nitto's warranty manual for full details.

■ **ZIG-ZAG MAIN & SHOULDER GROOVES**

The center and shoulder grooves are set in a zig-zag pattern to provide biting edges for traction.

■ **STAGGERED SHOULDER LUGS**

Increases traction for off-road conditions.

■ **DEEP SIDEWALL LUGS**

5-7mm lugs for aggressive appearance.

■ **LARGE SHOULDER AND TREAD BLOCKS WITH OPTIMIZED SIPING**

- Improve tread block rigidity for handling and stability
- Provides stable performance in dry & wet conditions
- Aggressive tread appearance

■ **WIDE & NARROW GROOVES**

The arrangement of wide and narrow grooves reduce noise levels while also providing traction performance.

■ **REINFORCED BLOCK FOUNDATION**

Improves tread block rigidity to reduce flex for stable dry performance.

# SIZE AND SPECIFICATIONS

RECON GRAPPLER A/T ALL-TERRAIN LIGHT TRUCK TIRE

## WHEEL DIAMETER

### 16"

TIRE SIZE	STOCK NUMBER	TREAD DEPTH (1/32")	INFLATED DIMENSIONS		APPROVED RIM (Measuring Rim) Width (in.)	MAXIMUM Load (lbs.) @ Press (PSI)	WEIGHT (lbs.)		
			Overall Dia. (in.)	Overall Width (in.)					
LT305/70R16 F	128/125R	218910	16.3	32.83	12.24	8.0-(9.0)-10.0	3970/3640	@ 80	65.87
LT315/75R16 E	127/124R	218920	16.3	34.57	12.32	8.0-(8.5)-10.5	3860/3525	@ 65	70.33
35X11.50R16LT D	125R	218950	16.9	34.53	11.42	7.5-(9.0)-10.0	3640	@ 65	68.34

### 17"

LT255/80R17 E	123/120R	218750	15.6	33.07	10.04	6.5-(7.0)-8.5	3415/3085	@ 80	56.06
LT265/70R17 E	123/120S	218740	15.7	31.65	10.71	7.0-(8.0)-9.0	3415/3085	@ 80	50.97
285/70R17	116T	218810	13.6	32.76	11.50	7.5-(8.5)-9.5	2756	@ 44	48.94
LT285/70R17 E	126/123S	218670	16.0	32.76	11.50	7.5-(8.5)-9.5	3750/3415	@ 80	54.59
LT285/75R17 E	128/125R	218680	16.0	33.86	11.26	7.5-(8.0)-9.5	3970/3640	@ 80	61.29
LT295/70R17 E	128/125R	218690	16.1	33.31	11.77	7.5-(8.5)-10.0	3970/3640	@ 80	62.35
LT305/70R17 E	125/122R	218700	16.3	33.86	12.24	8.0-(9.0)-10.0	3640/3305	@ 65	64.40
315/70R17	116T	218800	14.0	34.41	12.72	8.0-(9.5)-10.5	2756	@ 44	66.03
LT315/70R17 E	126/123R	218710	16.3	34.41	12.72	8.0-(9.5)-10.5	3750/3415	@ 65	66.20
33X11.50R17LT D	119S	218770	16.9	32.52	11.42	8.0-(9.0)-10.5	3000	@ 65	57.30
33X12.50R17LT F	124R	218660	16.9	32.52	12.52	8.5-(10.0)-11.0	3525	@ 80	63.54
35X12.50R17LT E	125R	218640	16.9	34.53	12.52	8.0-(10.0)-10.5	3640	@ 65	67.24
37X11.50R17LT D	128R	218650	16.9	36.54	11.42	7.5-(9.0)-10.0	3970	@ 65	70.61
37X12.50R17LT D	124R	218560	16.9	36.54	12.52	8.5-(10.0)-10.5	3525	@ 50	75.57
37X13.50R17LT D	125R	219020	16.9	36.54	13.58	9.0-(11.0)-11.5	3640	@ 50	81.57

### 18"

LT275/70R18 E	125/122S	218730	15.9	33.19	10.98	7.0-(8.0)-9.0	3640/3305	@ 80	54.34
LT285/65R18 E	125/122R	218590	16.0	32.56	11.50	8.5-(8.5)-10.0	3640/3305	@ 80	55.95
LT285/70R18 E	127/124R	218790	16.0	33.74	11.50	7.5-(8.5)-9.5	3860/3525	@ 80	59.50
LT285/75R18 E	129/126R	218600	16.0	34.84	11.26	7.5-(8.0)-9.5	4080/3750	@ 80	63.65
295/70R18	116S	218880	13.7	34.29	11.77	7.5-(8.5)-10.0	2756	@ 44	52.49
LT295/70R18 E	129/126R	218610	16.1	34.29	11.77	7.5-(8.5)-10.0	4080/3750	@ 80	63.60
305/60R18	116S	218840	13.9	32.40	12.24	8.5-(9.0)-11.0	2756	@ 44	49.91
LT305/65R18 F	128/125R	218720	16.3	33.58	12.24	9.0-(9.0)-11.0	3970/3640	@ 80	65.46
LT305/70R18 D	120/117R	218760	16.3	34.84	12.24	8.0-(9.0)-10.0	3085/2835	@ 50	67.97
LT325/60R18 E	124/121S	218620	16.4	33.35	13.03	9.5-(9.5)-11.5	3525/3195	@ 65	64.26
LT325/65R18 E	127/124R	218630	16.4	34.61	13.03	9.5-(9.5)-11.5	3860/3525	@ 65	71.08
33X11.50R18LT E	122S	219030	16.9	32.52	11.42	8.0-(9.0)-10.5	3305	@ 80	56.92
35X12.50R18LT F	128R	218570	16.9	34.53	12.52	8.5-(10.0)-11.0	3970	@ 80	70.33
37X12.50R18LT E	128R	218580	16.9	36.54	12.52	8.0-(10.0)-10.5	3970	@ 65	74.08

### 20"

265/50R20 XL	111T	218820	13.4	30.47	10.91	7.5-(8.5)-9.5	2403	@ 50	40.10
LT265/60R20 E	121/118S	218550	15.7	32.52	10.71	8.0-(8.0)-9.5	3195/2910	@ 80	54.01
275/55R20 XL	117T	218010	13.5	31.89	11.18	7.5-(8.5)-9.5	2833	@ 50	44.31
LT275/55R20 E	120/117S	218260	15.9	31.89	11.18	8.0-(8.5)-9.5	3085/2835	@ 80	53.68
275/60R20 XL	116S	218380	13.5	32.99	10.98	7.5-(8.0)-9.5	2756	@ 50	46.98
LT275/60R20 E	123/120S	218300	15.9	32.99	10.98	8.0-(8.0)-9.5	3415/3085	@ 80	55.03
275/65R20	116T	218460	13.5	34.09	10.98	7.5-(8.0)-9.5	2756	@ 44	47.53
LT275/65R20 E	126/123S	218000	15.9	34.09	10.98	8.0-(8.0)-9.5	3750/3415	@ 80	58.66
285/50R20 XL	116T	218430	13.6	31.26	11.69	8.0-(9.0)-10.0	2756	@ 50	44.86
285/55R20 XL	116T	218830	13.6	32.36	11.69	8.0-(9.0)-10.0	2756	@ 50	47.00
LT285/55R20 E	122/119S	218230	16.0	32.36	11.69	8.5-(9.0)-10.0	3305/3000	@ 80	56.66
LT285/60R20 E	125/122S	218310	16.0	33.46	11.50	8.5-(8.5)-10.0	3640/3305	@ 80	59.88
LT285/65R20 E	127/124S	218180	16.0	34.57	11.50	8.5-(8.5)-10.0	3860/3525	@ 80	60.30
LT295/55R20 E	123/120S	218190	16.1	32.76	12.17	8.5-(9.5)-10.5	3415/3085	@ 80	60.07
LT295/60R20 E	126/123S	218170	16.1	33.94	11.77	8.0-(8.5)-10.0	3750/3415	@ 80	60.53
LT295/65R20 E	129/126S	218210	16.1	35.12	11.77	8.5-(8.5)-10.5	4080/3750	@ 80	64.93
305/50R20 XL	120S	218420	13.9	32.05	12.44	8.5-(9.5)-11.0	3086	@ 50	49.98
305/55R20	116S	218400	13.9	33.23	12.44	8.5-(9.5)-11.0	2756	@ 44	51.37
LT305/55R20 F	125/122S	218250	16.3	33.23	12.44	9.0-(9.5)-11.0	3640/3305	@ 80	65.79
315/60R20	116S	218360	14.0	34.88	12.72	8.5-(9.5)-11.0	2756	@ 44	57.23
LT315/60R20 E	125/122S	218320	16.3	34.88	12.72	9.5-(9.5)-11.0	3640/3305	@ 65	69.84
LT325/60R20 E	126/123S	218220	16.4	35.35	13.03	9.5-(9.5)-11.5	3750/3415	@ 65	71.10
33X12.50R20LT F	119R	218050	16.9	32.52	12.52	8.5-(10.0)-11.0	3000	@ 80	62.68
34X11.50R20LT E	121R	218330	16.9	33.50	11.42	8.0-(9.0)-10.5	3195	@ 80	61.88
35X11.50R20LT E	124R	218090	16.9	34.53	11.42	8.0-(9.0)-10.5	3525	@ 80	60.65
35X12.50R20LT F	125R	218020	16.9	34.53	12.52	8.5-(10.0)-11.0	3640	@ 80	70.35
35X13.50R20LT F	126R	218110	16.9	34.53	13.58	9.5-(11.0)-12.0	3750	@ 80	76.08
37X12.50R20LT E	126R	218030	16.9	36.54	12.52	8.5-(10.0)-11.0	3750	@ 65	74.30
37X13.50R20LT E	127R	218070	16.9	36.54	13.58	9.5-(11.0)-12.0	3860	@ 65	79.19

### 22"

285/45R22 XL	114H	218390	13.6	32.09	11.22	9.0-(9.5)-10.5	2601	@ 50	43.61
LT285/50R22 E	121/118S	218280	16.0	33.27	11.69	8.5-(9.0)-10.0	3195/2910	@ 80	60.38
LT285/55R22 E	124/121S	218270	16.0	34.37	11.69	8.5-(9.0)-10.0	3525/3195	@ 80	61.20
305/40R22 XL	114S	218470	13.9	31.61	12.32	10.0-(11.0)-12.0	2601	@ 50	46.94
305/45R22 XL	118S	218410	13.9	32.80	11.93	9.5-(10.0)-11.5	2910	@ 50	46.94
305/55R22	116S	218370	13.9	35.24	12.44	8.5-(9.5)-11.0	2756	@ 44	62.02
315/45R22	116S	218450	14.0	33.19	12.40	10.0-(10.5)-12.0	2756	@ 44	50.31
LT325/50R22 F	127S	218290	16.4	34.84	13.23	9.5-(10.0)-11.5	3860	@ 80	75.18
33X12.50R22LT F	114R	218130	16.9	32.52	12.52	8.5-(10.0)-11.0	2600	@ 80	63.88
35X12.50R22LT F	121R	218100	16.9	34.53	12.52	8.5-(10.0)-11.0	3195	@ 80	69.74
37X13.50R22LT F	128R	218060	16.9	36.54	13.58	9.5-(11.0)-12.0	3970	@ 80	78.43
305/55R22	116S	218370	13.9	35.24	12.44	8.5-(9.5)-11.0	2756	@ 44	62.02
315/45R22	116S	218450	14.0	33.19	12.40	10.0-(10.5)-12.0	2756	@ 44	50.31
LT325/50R22 F	127S	218290	16.4	34.84	13.23	9.5-(10.0)-11.5	3860	@ 80	75.18

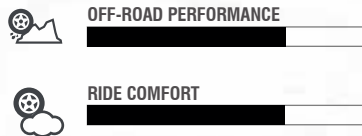
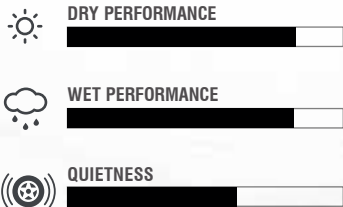
### 24"

305/35R24 XL	112S	218440	13.9	32.44	12.32	10.0-(11.0)-12.0	2469	@ 50	53.13
315/45R24	116S	218350	14.0	35.20	12.40	10.0-(10.5)-12.0	2756	@ 44	59.30
LT295/45R24 E	120/117R	218900	16.1	34.49	11.65	9.5-(10.0)-11.0	3085/2835	@ 80	69.00
LT315/50R24 F	127/124S	218340	16.3	36.46	12.91	9.5-(10.0)-11.0	3860/3525	@ 80	79.76
LT325/45R24 F	124R	218930	16.4	35.51	12.83	10.0-(11.0)-12.0	3525	@ 80	78.29
35X12.50R24LT F	116R	218150	16.9	34.53	12.44	10.0-(10.5)-12.0	2755	@ 80	73.44
37X13.50R24LT F	124R	218140	16.9	36.54	13.58	9.5-(11.0)-12.0	3525	@ 80	82.59

Technical specs are subject to change without notice. LT tires with a "C" load range have a 6-ply rating. LT tires with a "D" load range have an 8-ply rating. LT Tires with an "E" load range have a 10-ply rating. LT Tires with an "F" load range have a 12-ply rating.

# EXO GRAPPLER® AWT

HEAVY DUTY ALL-TERRAIN LIGHT TRUCK TIRE



\*Ratings based on comparison to other Nitto product in the segment

PERFORMANCE RATED: **Q**

TRACTION: **A** TEMPERATURE: **B**



### ■ WINTER PERFORMANCE

Rated with the 3-peak mountain snowflake for winter driving conditions, the Exo Grappler's sipes and large lateral grooves provide biting edges as well as water and snow/slush evacuation. These tread features are combined with a new durable compound that allows for traction in freezing temperatures.

For additional traction, TSMI #15 studs can be added for increased winter traction.

### ■ SIDEWALL TECHNOLOGY

The staggered shoulder blocks provide biting edges for off-road traction in loose dirt surfaces. The 3-ply sidewall with large sidewall lugs offer additional sidewall strength and puncture resistance.

### ■ DURABLE COMPOUND

A special mix of natural rubber, high strength polymers, and wear resistant materials aids cut and chip resistance on unpaved gravel roads.

### ■ DUAL SIDEWALL DESIGNS

Each Grappler has two sidewall designs so you can choose how your tires look. On the Exo Grappler, one side has chisel-shaped sidewall lugs and the other has Y-shaped sidewall-lugs.

## SIZE AND SPECIFICATIONS

**EXO GRAPPLER<sup>®</sup> AWT**  
HEAVY DUTY ALL-TERRAIN LIGHT TRUCK TIRE

WHEEL DIAMETER	TIRE SIZE	STOCK NUMBER	TREAD DEPTH (1/32")	INFLATED DIMENSIONS		APPROVED RIM (Measuring Rim) Width (in.)	MAXIMUM		WEIGHT (lbs.)	
				Overall Dia. (in.)	Overall Width (in.)		Load (lbs.)	@ Press (PSI)		
<b>17"</b>	LT235/80R17 E	120/117Q	206890	18.3	32.05	9.25	6.0-(6.5)-8.0	3085/2835	@ 80	51.34
	LT245/75R17 E	121Q	206940	18.3	31.73	9.76	6.5-(7.0)-8.0	3195/2910	@ 80	53.34
	LT265/70R17 E	121/118Q	206870	18.4	31.89	10.71	7.0-(8.0)-9.0	3195/2910	@ 80	60.81
	LT285/70R17 E	121/118Q	206860	18.4	32.99	11.50	7.5-(8.5)-9.5	3195/2910	@ 80	61.51
	35X12.50R17LT E	121Q	206900	19.3	34.76	12.52	8.0-(10.0)-10.5	3195	@ 65	74.48
	37X13.50R17LT E	121Q	201390	19.3	36.77	13.58	9.0-(11.0)-11.5	3195	@ 65	81.90
<b>18"</b>	LT265/65R18 E	122/119Q	206590	18.4	31.77	10.71	8.0-(8.0)-9.5	3305/3000	@ 80	57.76
	LT275/65R18 E	123/120Q	206910	18.4	32.32	10.98	8.0-(8.0)-9.5	3415/3085	@ 80	60.54
	LT275/70R18 E	125/122Q	206960	18.4	33.43	10.98	7.0-(8.0)-9.0	3640/3305	@ 80	60.45
	LT285/65R18 E	125/122Q	201300	18.4	32.80	11.50	8.5-(8.5)-10.0	3640/3305	@ 80	61.42
	LT285/70R18 E	127/124Q	201310	18.4	33.98	11.50	7.5-(8.5)-9.5	3860/3525	@ 80	64.27
	35X12.50R18LT E	123Q	206920	19.3	34.76	12.52	8.5-(10.0)-11.0	3415	@ 65	71.29
<b>20"</b>	LT275/55R20 E	120/117Q	201320	18.4	32.13	11.18	8.0-(8.5)-9.5	3085/2835	@ 80	60.64
	LT275/60R20 E	123/120Q	206580	18.4	33.23	10.98	8.0-(8.0)-9.5	3415/3085	@ 80	63.84
	LT275/65R20 E	126/123Q	206950	18.4	34.33	10.98	8.0-(8.0)-9.5	3750/3415	@ 80	65.14
	LT285/55R20 E	122/119Q	201290	18.4	32.60	11.69	8.5-(9.0)-10.0	3305/3000	@ 80	64.81
	LT285/60R20 E	125/122Q	201340	18.4	33.70	11.50	8.5-(8.5)-10.0	3640/3305	@ 80	64.65
	LT285/65R20 E	127/124Q	201330	18.4	34.80	11.50	8.5-(8.5)-10.0	3860/3525	@ 80	68.51
	LT295/55R20 E	123/120Q	206570	18.4	32.99	12.17	8.5-(9.5)-10.5	3415/3085	@ 80	69.20
	LT305/55R20 E	121/118Q	206930	18.4	33.46	12.44	9.0-(9.5)-11.0	3195/2910	@ 65	67.83
	LT325/60R20 E	126/123Q	206620	18.4	35.59	13.03	9.5-(9.5)-11.5	3750/3415	@ 65	77.29
	35X11.50R20LT E	124Q	201400	19.3	34.76	11.42	8.0-(9.0)-10.5	3525	@ 80	68.97
	35X12.50R20LT E	121Q	206880	19.3	34.76	12.52	8.5-(10.0)-11.0	3195	@ 65	71.65
	37X13.50R20LT E	127Q	201410	19.3	36.77	13.58	9.5-(11.0)-12.0	3860	@ 65	84.73

Technical specs are subject to change without notice. LT tires with a "C" load range have a 6-ply rating. LT tires with a "D" load range have an 8-ply rating. LT Tires with an "E" load range have a 10-ply rating. LT Tires with an "F" load range have a 12-ply rating.



# DURA GRAPPLER®

HIGHWAY TERRAIN LIGHT TRUCK TIRE



\*Ratings based on comparison to other Nitto product in the segment

PERFORMANCE RATED: **HQRST** UTQG TREADWEAR: **600** TRACTION: **A** TEMPERATURE: **B**



**LIMITED TREADWEAR WARRANTY** | **60K\***  
FOR P-METRIC AND METRIC SIZES

\*Please refer to Nitto's warranty manual for full details.

■ **ADVANCED SIPING TECHNOLOGIES**

3D Multiwave sipes increase traction in wet conditions while maintaining tread block rigidity.

■ **SPECIFIC PATTERNS**

The Dura Grappler is also offered in two separate tread patterns dedicated for LT-Metric sizes and P-Metric sizes. LT-Metric sizes are offered in a durable 4-rib design, while the P-Metric sizes have a quiet 5-rib design. Each P-Metric/Metric size is backed by a 60,000-mile limited treadwear warranty.

■ **DUAL SIDEWALL DESIGNS**

Each Grappler has two sidewall designs so you can choose how your tires look. On the Dura Grappler, one side has a metal fin design and the other has a traditional design.



## SIZE AND SPECIFICATIONS

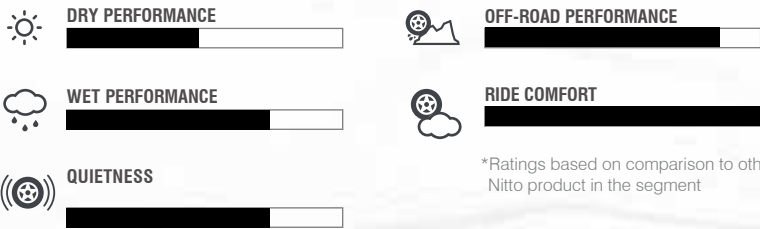
**DURA TERRAIN**  
 HIGHWAY TERRAIN LIGHT TRUCK TIRE

WHEEL DIAMETER	TIRE SIZE	STOCK NUMBER	TREAD DEPTH (1/32")	INFLATED DIMENSIONS		APPROVED RIM (Measuring Rim) Width (in.)	MAXIMUM		WEIGHT (lbs.)
				Overall Dia. (in.)	Overall Width (in.)		Load (lbs.)	@ Press (PSI)	
<b>16"</b>	LT235/85R16 E 120R	205140	15.6	31.69	9.57	6.0-(6.5)-7.5	3042	@ 80	45.43
	LT245/75R16 E 120/116R	205090	15.6	30.47	9.96	6.5-(7.0)-8.0	3042/2778	@ 80	45.96
	LT265/75R16 E 123/120Q	205620	16.8	31.65	10.51	7.0-(7.5)-9.0	3415/3085	@ 80	50.71
	LT285/75R16 E 126/123R	205110	16.9	32.87	11.50	7.5-(8.0)-9.5	3750/3415	@ 80	57.98
	LT305/70R16 E 124/121R	205040	16.9	32.79	12.56	8.0-(9.0)-10.0	3525/3195	@ 65	58.21
<b>17"</b>	LT235/80R17 E 120/117R	205130	15.6	31.77	9.32	6.0-(6.5)-8.0	3085/2835	@ 80	45.16
	P245/65R17 105S	205270	12.6	29.45	9.76	7.0-(7.0)-8.5	2039	@ 44	35.74
	LT245/70R17 E 119/116R	205050	15.7	30.59	9.69	6.5-(7.0)-8.0	3000/2755	@ 80	44.29
	LT245/75R17 E 121/118Q	205650	16.4	31.50	9.76	6.5-(7.0)-8.0	3195/2910	@ 80	48.50
	265/65R17 112T	205170	12.9	30.51	10.71	7.5-(8.0)-9.5	2469	@ 44	38.68
	LT265/70R17 E 121/118Q	205630	16.8	31.65	10.71	7.0-(8.0)-9.0	3195/2910	@ 80	50.71
	P265/70R17 113S	205200	13.1	31.57	10.79	7.0-(8.0)-9.0	2535	@ 44	42.58
	LT285/70R17 E 126/123R	205070	16.9	32.79	11.49	7.5-(8.5)-9.5	3750/3415	@ 80	55.27
	LT285/75R17 E 128/125R	205370	16.9	33.86	11.61	7.5-(8.0)-9.5	3970/3640	@ 80	67.23
<b>18"</b>	255/70R18 XL 117S	205350	13.0	32.17	10.08	6.5-(7.5)-8.5	2833	@ 50	42.04
	265/60R18 110H	205160	12.9	30.60	10.70	7.5-(8.0)-9.5	2337	@ 51	39.33
	LT275/65R18 E 123/120Q	205640	16.8	32.09	10.98	8.0-(8.0)-9.5	3415/3085	@ 80	55.12
	LT275/70R18 E 125/122R	205080	16.0	33.23	11.00	7.0-(8.0)-9.0	3640/3305	@ 80	53.47
	LT305/70R18 E 126/123R	205380	17.3	35.28	12.80	8.0-(9.0)-10.0	3750/3415	@ 65	67.22
	LT325/60R18 E 124/121R	205360	16.0	33.03	12.91	9.5-(9.5)-11.5	3525/3195	@ 65	69.14
<b>20"</b>	275/55R20 XL 117H	205150	13.0	31.89	11.34	7.5-(8.5)-9.5	2833	@ 50	44.12
	LT275/60R20 E 123/120R	205010	16.0	33.03	10.90	8.0-(8.0)-9.5	3415/3085	@ 80	56.46
	LT275/65R20 E 126/123R	205030	16.0	34.05	10.90	8.0-(8.0)-9.5	3750/3415	@ 80	60.76
	LT305/55R 20 E 121/118R	205340	16.0	33.11	12.56	9.0-(9.5)-11.0	3195/2910	@ 65	65.61
<b>22"</b>	LT285/50R22 E 121/118R	205000	16.0	33.27	11.50	8.5-(9.0)-10.0	3195/2910	@ 80	63.83

Technical specs are subject to change without notice. LT tires with a "C" load range have a 6-ply rating. LT tires with a "D" load range have an 8-ply rating. LT Tires with an "E" load range have a 10-ply rating. LT Tires with an "F" load range have a 12-ply rating. (XL) Indicates Extra Load.

# NOMAD GRAPPLER™

CROSSOVER-TERRAIN TIRE



\*Ratings based on comparison to other Nitto product in the segment

PERFORMANCE RATED: <b>T</b>	UTQG TREADWEAR: <b>540</b>	TRACTION: <b>A</b>	TEMPERATURE: <b>B</b>
PERFORMANCE RATED: <b>HV</b>	UTQG TREADWEAR: <b>500</b>	TRACTION: <b>A</b>	TEMPERATURE: <b>A</b>

LIMITED TREADWEAR WARRANTY **60K**

\*Please refer to Nitto's warranty manual for full details.

■ **DUAL SIDEWALL DESIGNS**

Like every Grappler, the Nomad Grappler comes equipped with two unique sidewall designs so that you can choose the design that best fits your vehicle.

■ **REDUCED NOISE**

Nomad Grappler's variable pitch tread pattern features tread blocks of slightly different sizes to break up and reduce the noise frequencies as you travel down the highway.

■ **OFF-ROAD TRACTION**

Discover new destinations and your CUV's off-roading capabilities with Nomad Grappler's off-road traction enhancing features like the staggered sidewall lugs and zigzag lateral grooves.

■ **ALL-WEATHER ADVENTURING** 

The Nomad Grappler is 3-peak mountain snowflake rated for additional all-weather capability. The well balanced tread compound with good wet and snow performance means more assurance in the winter.

■ **WET AND DRY TRACTION**

Tapered blocks improve traction by increasing tread block rigidity. When the rain hits the road, wide circumferential zigzag grooves evacuate water and triangular sipes provide biting edges for improved wet traction.

## SIZE AND SPECIFICATIONS

YAMMO GRAPPLE™  
CROSSOVER-TERRAIN TIRE

WHEEL DIAMETER	TIRE SIZE	STOCK NUMBER	TREAD DEPTH (1/32")	INFLATED DIMENSIONS		APPROVED RIM (Measuring Rim) Width (in.)	MAXIMUM		WEIGHT (lbs.)		
				Overall Dia. (in.)	Overall Width (in.)		Load (lbs.)	Press (PSI)			
<b>17"</b>	215/65R17 XL	103T	212020	12.5	28.03	8.70	6.0-(6.5)-7.0	1929	@	50	28.66
	225/55R17 XL	101H	212060	12.6	26.77	9.17	6.0-(7.0)-8.0	1819	@	50	28.51
	225/60R17 XL	103H	212090	12.6	27.64	8.98	6.0-(6.5)-8.0	1929	@	50	29.23
	225/65R17 XL	106H	212100	12.6	28.50	8.98	6.0-(6.5)-8.0	2094	@	50	29.98
	235/55R17 XL	103H	212130	12.7	27.17	9.65	6.5-(7.5)-8.5	1929	@	50	29.85
	235/65R17 XL	108H	212070	12.7	29.06	9.45	6.5-(7.0)-8.5	2205	@	50	33.58
	245/65R17 XL	111H	211960	12.9	29.53	9.76	7.0-(7.0)-8.5	2403	@	50	34.26
	245/70R17 XL	114T	211980	12.9	30.55	9.76	6.5-(7.0)-8.0	2601	@	50	36.16
	265/65R17 XL	116T	212260	13.1	30.55	10.71	7.5-(8.0)-9.5	2756	@	50	38.07
	265/70R17	115T	212250	13.1	31.65	10.71	7.0-(8.0)-9.0	2679	@	44	41.91
	285/70R17	116T	212330	13.4	32.76	11.50	7.5-(8.5)-9.5	2756	@	44	46.05
	<b>18"</b>	225/55R18 XL	102H	212180	12.6	27.76	9.17	6.0-(7.0)-8.0	1874	@	50
225/60R18 XL		104H	212150	12.6	28.62	8.98	6.0-(6.5)-8.0	1984	@	50	30.12
235/55R18 XL		104H	212160	12.7	28.15	9.65	6.5-(7.5)-8.5	1984	@	50	31.04
235/60R18 XL		107V	212080	12.7	29.09	9.45	6.5-(7.0)-8.5	2149	@	50	32.72
235/65R18 XL		110H	212120	12.7	30.04	9.45	6.5-(7.0)-8.5	2337	@	50	34.72
245/60R18 XL		109H	212110	12.9	29.57	9.76	7.0-(7.0)-8.5	2271	@	50	35.03
255/55R18 XL		109H	212270	13.0	29.02	10.43	7.0-(8.0)-9.0	2271	@	50	35.85
255/60R18 XL		112H	212220	13.0	30.04	10.24	7.0-(7.5)-9.0	2469	@	50	38.03
255/65R18 XL		115T	212140	13.0	31.06	10.24	7.0-(7.5)-9.0	2679	@	50	37.17
265/60R18 XL		114H	211990	13.1	30.51	10.71	7.5-(8.0)-9.5	2601	@	50	38.78
<b>20"</b>	235/55R20 XL	105H	212190	12.7	30.16	9.65	6.5-(7.5)-8.5	2039	@	50	34.02
	245/45R20 XL	103H	212350	12.9	28.66	9.57	7.5-(8.0)-9.0	1929	@	50	31.92
	245/50R20 XL	105H	212030	12.9	29.69	9.96	7.0-(7.5)-8.5	2039	@	50	34.68
	245/60R20 XL	111H	212210	12.9	31.57	9.76	7.0-(7.0)-8.5	2403	@	50	37.99
	255/40R20 XL	101H	212290	13.0	28.03	10.24	8.5-(9.0)-10.0	1819	@	50	32.76
	255/45R20 XL	105V	212040	13.0	29.06	10.04	8.0-(8.5)-9.5	2039	@	50	34.02
	255/50R20 XL	109H	212200	13.0	30.08	10.43	7.0-(8.0)-9.0	2271	@	50	36.64
	255/55R20 XL	110H	212170	13.0	31.02	10.43	7.0-(8.0)-9.0	2337	@	50	38.98
	265/45R20 XL	108H	211970	13.1	29.37	10.47	8.5-(9.0)-10.0	2205	@	50	34.81
	265/50R20 XL	111V	212050	13.1	30.47	10.91	7.5-(8.5)-9.5	2403	@	50	38.01
	275/45R20 XL	110H	212300	13.2	29.76	10.75	8.5-(9.0)-10.5	2337	@	50	37.85
	275/55R20 XL	117H	212310	13.2	31.89	11.18	7.5-(8.5)-9.5	2833	@	50	42.57
	275/60R20 XL	116H	212320	13.2	32.99	10.98	7.5-(8.0)-9.5	2756	@	50	44.69
	285/50R20 XL	116H	212340	13.4	31.26	11.69	8.0-(9.0)-10.0	2756	@	50	42.00

(XL) Indicates Extra Load.

# NT420<sup>®</sup>

LUXURY TRUCK & SUV TIRE



DRY PERFORMANCE



QUIETNESS



WET PERFORMANCE



RIDE COMFORT



\*Ratings based on comparison to other Nitto product in the segment

PERFORMANCE RATED: HVW UTQG TREADWEAR: 460 TRACTION: A TEMPERATURE: A

## ■ DRY PERFORMANCE

Large outer tread blocks increase the amount of road contact surface area, improving cornering grip and performance in dry conditions.

## ■ EVEN WEAR

The tread's non-directional design allows for cross rotation for more even wear and a longer tread life.

\*Consult your tire retailer on the appropriate rotation pattern for your vehicle.

## ■ REDUCED NOISE

Asymmetric sipe and groove count combined with a variable pitch tread block design work together to reduce annoying noise frequency peaks.

## ■ WET PERFORMANCE

Two wide circumferential grooves channel water away from the tread blocks, while the high number of inner lateral grooves provide biting edges for wet traction.

## ■ LT-METRIC SIZES

NT420V in LT-metric sizes are constructed to handle heavier  $\frac{3}{4}$  to 1-ton trucks like heavy-duty diesel trucks.

## SIZE AND SPECIFICATIONS

LUXURY TRUCK & SUV TIRE

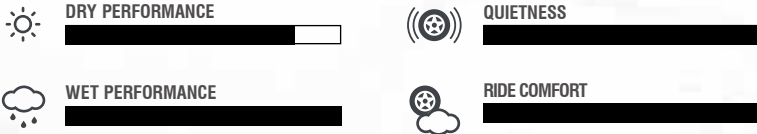
WHEEL DIAMETER	TIRE SIZE	STOCK NUMBER	TREAD DEPTH (1/32")	INFLATED DIMENSIONS		APPROVED RIM (Measuring Rim Width (in.))	MAXIMUM		WEIGHT (lbs.)		
				Overall Dia. (in.)	Overall Width (in.)		Load (lbs.)	Press (PSI)			
20"	265/45R20 XL	108V	206790	10.3	29.37	10.47	8.5-(9.0)-10.0	2205	@	50	33.66
	265/50R20 XL	111V	203090	10.3	30.47	10.91	7.5-(8.5)-9.5	2403	@	50	35.49
	275/40R20 XL	106W	206740	10.5	28.66	10.94	9.0-(9.5)-11.0	2094	@	50	35.94
	275/45R20 XL	110V	206770	10.5	29.76	10.75	8.5-(9.0)-10.5	2337	@	50	35.78
	275/55R20 XL	117H	203920	12.2	31.89	11.18	7.5-(8.5)-9.5	2833	@	50	42.84
	275/60R20 XL	116H	206750	12.2	32.99	10.98	7.5-(8.0)-9.5	2756	@	50	43.50
	285/40R20 XL	108V	206990	10.6	28.98	11.42	9.5-(10.0)-11.0	2205	@	50	36.77
	285/50R20 XL	116V	207640	10.6	31.26	11.69	8.0-(9.0)-10.0	2756	@	50	42.51
	295/45R20 XL	114V	206780	10.7	30.47	11.65	9.5-(10.0)-11.0	2601	@	50	39.18
	305/50R20 XL	120H	203950	12.5	32.05	12.44	8.5-(9.5)-11.0	3086	@	50	46.54
	LT305/50R20 F	122/119S	208750	14.1	32.05	12.44	9.0-(9.5)-11.0	3305/3000	@	80	58.00
	LT305/55R20 F	125/122S	206660	14.2	33.23	12.44	9.0-(9.5)-11.0	3640/3305	@	80	61.99
	315/35R20 XL	110W	207770	11.0	28.66	12.60	10.5-(11.0)-12.5	2337	@	50	40.26
	LT325/50R20 F	124S	206730	14.5	32.83	13.23	9.5-(10.0)-11.5	3525	@	80	67.02
22"	265/35R22 XL	102V	207650	10.3	29.33	10.67	9.0-(9.5)-10.5	1874	@	50	35.52
	265/40R22 XL	106V	207470	10.3	30.35	10.67	9.0-(9.5)-10.5	2094	@	50	35.49
	275/35R22 XL	104W	207720	10.5	29.57	10.94	9.0-(9.5)-11.0	1984	@	50	37.39
	275/40R22 XL	107V	207480	10.5	30.67	10.94	9.0-(9.5)-11.0	2149	@	50	37.04
	275/45R22 XL	112V	206980	10.5	31.77	10.75	8.5-(9.0)-10.5	2469	@	50	39.09
	275/50R22	111H	207750	12.2	32.87	11.18	7.5-(8.5)-9.5	2403	@	51	41.12
	285/35R22 XL	106W	206760	10.6	29.88	11.42	9.5-(10.0)-11.0	2094	@	50	36.60
	285/40R22 XL	110W	207490	10.6	30.98	11.42	9.5-(10.0)-11.0	2337	@	50	38.78
	285/45R22 XL	114H	203930	12.2	32.09	11.22	9.0-(9.5)-10.5	2601	@	50	41.40
	295/30R22 XL	103V	207670	10.7	29.02	11.85	10.0-(10.5)-11.0	1929	@	50	37.37
	305/40R22 XL	114H	203960	11.2	31.61	12.32	10.0-(11.0)-12.0	2601	@	50	44.14
	305/45R22 XL	118H	203940	12.5	32.80	11.93	9.5-(10.0)-11.5	2910	@	50	45.86
	LT305/50R22 F	124/121S	207740	14.1	34.06	12.44	9.0-(9.5)-11.0	3525/3195	@	80	58.86
	315/30R22 XL	107W	207710	11.0	29.49	12.60	10.5-(11.0)-11.5	2149	@	50	40.54
	LT315/45R22 F	121/118S	205690	14.4	33.19	12.40	10.0-(10.5)-12.0	3195/2910	@	80	66.14
325/35R22 XL	114W	207760	11.1	30.98	13.03	11.0-(11.5)-13.0	2601	@	50	42.88	
23"	305/40R23 XL	115H	208740	12.5	32.60	12.32	10.0-(11.0)-12.0	2679	@	50	49.47
24"	285/35R24 XL	108V	207730	10.6	31.89	11.42	9.5-(10.0)-11.0	2205	@	50	42.95
	285/40R24 XL	112V	212410	10.6	32.99	11.42	9.5-(10.0)-11.0	2469	@	50	42.33
	295/35R24 XL	110H	207680	12.3	32.13	11.85	10.0-(10.5)-11.5	2337	@	50	44.95
	305/35R24 XL	112H	207690	12.5	32.44	12.32	10.0-(11.0)-12.0	2469	@	50	47.22

Technical specs are subject to change without notice. LT tires with a "C" load range have a 6-ply rating. LT tires with a "D" load range have an 8-ply rating. LT Tires with an "E" load range have a 10-ply rating. LT Tires with an "F" load range have a 12-ply rating. (XL) Indicates Extra Load.



# NT421

## PREMIER ALL-SEASON CROSSOVER & SUV TIRE



\*Ratings based on comparison to other Nitto product in the segment

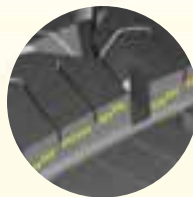
PERFORMANCE RATED: **HVW** UTQG TREADWEAR FOR W: **560** UTQG TREADWEAR FOR H AND V: **640** TRACTION: **A** TEMPERATURE: **A**

**LIMITED TREADWEAR WARRANTY** | **60K & 75K\***  
FOR W SIZES | FOR H AND V SIZES

\*Please refer to Nitto's warranty manual for full details.

### ■ ADDED SHOULDER INSERTS

The circumferential rubber shoulder insert adds an additional layer of strength to help you navigate potholes and other adverse road conditions.



### ■ MAINTENANCE INDICATORS

Nitto's intelligent maintenance indicators are a service feature that visually show how your tires are wearing. They can also help alert you to wear issues before they become big problems.

### ■ SIPING

Siping is one of the most important tire technologies for wet and snow traction. Nitto's revolutionary 3D multiwave and 3D Interlocking sipe design provide traction without sacrificing handling.

### ■ WINTER TRACTION

The inside tread area of the tire was intended for wet and winter weather performance. The large, open grooves provide lateral water evacuation while the high sipe density increases the number of biting edges contacting the road.

## SIZE AND SPECIFICATIONS



PREMIER ALL-SEASON CROSSOVER & SUV TIRE

WHEEL DIAMETER	TIRE SIZE	STOCK NUMBER	TREAD DEPTH (1/32")	INFLATED DIMENSIONS		APPROVED RIM (Measuring Rim) Width (in.)	MAXIMUM		WEIGHT (lbs.)	
				Overall Dia. (in.)	Overall Width (in.)		Load (lbs.)	@ Press (PSI)		
<b>17"</b>	225/60R17 XL	103V	210610	12.0	27.64	8.98	6.0-(6.5)-8.0	1929	@ 50	29.50
	225/65R17 XL	106H	210640	12.1	28.50	8.98	6.0-(6.5)-8.0	2094	@ 50	32.32
	235/60R17 XL	106H	210620	12.1	28.11	9.45	6.5-(7.0)-8.5	2094	@ 50	32.97
	235/65R17 XL	108H	210650	12.2	29.06	9.45	6.5-(7.0)-8.5	2205	@ 50	33.94
	245/65R17 XL	111H	210660	12.3	29.53	9.76	7.0-(7.0)-8.5	2403	@ 50	35.45
	255/60R17 XL	110V	210630	12.3	29.06	10.24	7.0-(7.5)-9.0	2337	@ 50	36.24
	275/55R17	109V	210600	12.5	28.90	11.18	7.5-(8.5)-9.5	2271	@ 51	38.54
<b>18"</b>	225/55R18 XL	102V	210670	11.8	27.76	9.17	6.0-(7.0)-8.0	1874	@ 50	29.98
	235/55R18 XL	104V	210680	12.0	28.15	9.65	6.5-(7.5)-8.5	1984	@ 50	31.59
	235/60R18 XL	107W	210700	10.1	29.09	9.45	6.5-(7.0)-8.5	2149	@ 50	33.39
	235/65R18 XL	110H	210730	12.2	30.04	9.45	6.5-(7.0)-8.5	2337	@ 50	35.92
	245/60R18 XL	109H	210710	12.2	29.57	9.76	7.0-(7.0)-8.5	2271	@ 50	34.77
	255/55R18 XL	109V	210690	12.2	29.02	10.43	7.0-(8.0)-9.0	2271	@ 50	36.16
	255/65R18 XL	115H	210740	12.5	31.06	10.24	7.0-(7.5)-9.0	2679	@ 50	39.32
	265/60R18 XL	114V	210720	12.5	30.51	10.71	7.5-(8.0)-9.5	2601	@ 50	40.39
	265/65R18	114H	210750	12.6	31.54	10.71	7.5-(8.0)-9.5	2601	@ 51	41.52
<b>19"</b>	225/55R19 XL	103V	210950	11.8	28.78	9.17	6.0-(7.0)-8.0	1929	@ 50	31.75
	235/50R19 XL	103V	210760	11.8	28.31	9.65	6.5-(7.5)-8.5	1929	@ 50	31.51
	235/55R19 XL	105W	210790	10.1	29.17	9.65	6.5-(7.5)-8.5	2039	@ 50	33.25
	245/55R19 XL	107H	210800	12.1	29.65	9.96	7.0-(7.5)-8.5	2149	@ 50	35.27
	255/50R19 XL	107V	210770	12.1	29.09	10.43	7.0-(8.0)-9.0	2149	@ 50	36.92
	255/55R19 XL	111V	210810	12.2	30.04	10.43	7.0-(8.0)-9.0	2403	@ 50	38.21
	255/60R19 XL	113H	210820	12.3	31.06	10.24	7.0-(7.5)-9.0	2535	@ 50	39.01
	265/50R19 XL	110V	210780	12.2	29.49	10.91	7.5-(8.5)-9.5	2337	@ 50	38.02
	<b>20"</b>	235/55R20 XL	105W	210890	10.1	30.16	9.65	6.5-(7.5)-8.5	2039	@ 50
245/50R20 XL		105V	210860	12.0	29.69	9.96	7.0-(7.5)-8.5	2039	@ 50	36.75
255/45R20 XL		105W	210840	10.1	29.06	10.04	8.0-(8.5)-9.5	2039	@ 50	33.52
255/50R20 XL		109V	210870	12.1	30.08	10.43	7.0-(8.0)-9.0	2271	@ 50	36.88
255/55R20 XL		110H	210900	12.2	31.02	10.43	7.0-(8.0)-9.0	2337	@ 50	38.10
265/50R20 XL		111V	210880	12.2	30.47	10.91	7.5-(8.5)-9.5	2403	@ 50	41.28
275/40R20 XL		106W	210830	10.1	28.66	10.94	9.0-(9.5)-11.0	2094	@ 50	35.74
275/45R20 XL		110W	210850	10.1	29.76	10.75	8.5-(9.0)-10.5	2337	@ 50	36.96
275/50R20 XL		113H	210590	12.2	30.87	11.18	7.5-(8.5)-9.5	2535	@ 50	38.65
275/55R20 XL		117V	210910	12.5	31.89	11.18	7.5-(8.5)-9.5	2833	@ 50	44.15
275/60R20		115H	210920	12.6	32.99	10.98	7.5-(8.0)-9.5	2679	@ 51	44.71
<b>22"</b>	285/45R22 XL	114V	210930	12.3	32.09	11.22	9.0-(9.5)-10.5	2601	@ 50	44.02

(XL) Indicates Extra Load.



# NT05<sup>®</sup>

MAX PERFORMANCE TIRE



\*Ratings based on comparison to other Nitto product in the segment

PERFORMANCE RATED: **W** UTQG TREADWEAR: **200** UTQG TREADWEAR FOR SELECT SIZES: **140** TRACTION: **AA** TEMPERATURE: **A**



## ■ DRY PERFORMANCE

The continuous center rib combined with large outer shoulder tread blocks provide consistent contact with the road for a high level of dry performance.

## ■ HANDLING STABILITY

The reinforced tread blocks and the large continuous center rib provide exceptional rigidity and stability.

## ■ PREDICTABLE CORNERING

The specifically formulated tread compound and reinforced internal construction were engineered to emphasize dry road response, traction, handling and high-speed capabilities.



## SIZE AND SPECIFICATIONS

MAX PERFORMANCE TIRE

**WIDE**

WHEEL DIAMETER	TIRE SIZE	STOCK NUMBER	TREAD DEPTH (1/32")	INFLATED DIMENSIONS		APPROVED RIM (Measuring Rim) Width (in.)	MAXIMUM		WEIGHT (lbs.)			
				Overall Dia. (in.)	Overall Width (in.)		Load (lbs.)	Press (PSI)				
<b>15"</b>	205/50ZR15 XL	89W	207350	7.2	23.11	8.43	5.5-(6.5)-7.5	1279	@	50	19.67	
	<b>17"</b>	225/45R17 XL	94W	207360	7.2	24.96	8.86	7.0-(7.5)-8.5	1477	@	50	23.15
		235/40ZR17	90W	207120	7.2	24.45	9.57	8.0-(8.5)-9.5	1323	@	51	23.01
		235/45R17 XL	97W	207330	7.2	25.35	9.29	7.5-(8.0)-9.0	1609	@	50	24.56
		255/40ZR17 XL	98W	207130	7.2	25.08	10.12	8.5-(9.0)-10.0	1653	@	50	26.27
<b>18"</b>	275/40ZR17	98W	207010	7.2	25.59	10.79	9.0-(9.5)-11.0	1653	@	51	28.25	
	315/35ZR17	102W	207000	7.2	25.55	12.40	10.5-(11.0)-12.5	1874	@	51	30.75	
	225/40R18 XL	92W	207240	7.2	25.08	9.06	7.5-(8.0)-9.0	1389	@	50	23.87	
	235/40R18 XL	95W	207160	7.2	25.43	9.57	8.0-(8.5)-9.5	1521	@	50	24.43	
	245/40R18 XL	97W	207030	7.2	25.59	9.65	8.0-(8.5)-9.5	1609	@	50	25.20	
	255/35ZR18 XL	94W	207340	7.2	25.00	10.24	8.5-(9.0)-10.0	1477	@	50	25.17	
	265/35R18 XL	97W	207060	7.2	25.31	10.59	9.0-(9.5)-10.5	1609	@	50	26.52	
	275/35ZR18	95W	207390	7.2	25.55	10.94	9.0-(9.5)-11.0	1521	@	51	28.05	
	†275/35ZR18 XL	99W	207020	7.2	25.63	10.79	9.0-(9.5)-11.0	1709	@	50	27.56	
	275/40ZR18	99W	207050	7.2	26.57	10.79	9.0-(9.5)-11.0	1709	@	51	29.63	
<b>19"</b>	285/35ZR18 XL	101W	207140	7.2	25.91	11.30	9.5-(10.0)-11.0	1819	@	50	28.95	
	295/35ZR18	99W	207150	7.2	26.18	11.61	10.0-(10.5)-11.5	1709	@	51	30.03	
	†295/35ZR18	99W	207400	7.2	26.10	11.85	10.0-(10.5)-11.5	1709	@	51	30.24	
	†295/40ZR18	103W	207410	7.2	27.28	11.85	10.0-(10.5)-11.5	1929	@	51	32.92	
	295/45ZR18 XL	112W	207170	7.2	28.46	11.46	9.5-(10.0)-11.0	2469	@	50	33.58	
	235/35ZR19 XL	91W	207080	7.2	25.43	9.53	8.0-(8.5)-9.5	1356	@	50	24.19	
	245/35R19 XL	93W	207090	7.2	25.79	9.69	8.0-(8.5)-9.5	1433	@	50	24.73	
	245/40ZR19 XL	98W	207200	7.2	26.73	9.65	8.0-(8.5)-9.5	1653	@	50	26.87	
	255/40ZR19 XL	100W	207370	7.2	27.05	10.24	8.5-(9.0)-10.0	1764	@	50	28.24	
<b>20"</b>	275/30R19 XL	96W	207070	7.2	25.51	10.71	9.0-(9.5)-10.0	1565	@	50	27.73	
	275/35ZR19 XL	100W	207100	7.2	26.65	10.79	9.0-(9.5)-11.0	1764	@	50	28.98	
	305/35ZR19	102W	207380	7.2	27.44	12.32	10.0-(11.0)-12.0	1874	@	51	33.68	
	335/30ZR19	103W	207180	7.2	26.89	13.31	11.5-(12.0)-12.5	1929	@	51	33.94	
	255/35ZR20 XL	97W	207210	7.2	26.97	10.08	8.5-(9.0)-10.0	1609	@	50	27.69	
	255/45ZR20	101W	207230	7.2	29.06	10.08	8.0-(8.5)-9.5	1819	@	51	31.68	
	275/35ZR20 XL	102W	207220	7.2	27.56	10.75	9.0-(9.5)-11.0	1874	@	50	30.49	
275/40R20 XL	106W	207040	7.2	28.62	10.79	9.0-(9.5)-11.0	2094	@	50	32.51		
305/30ZR20 XL	103W	207320	7.2	27.24	12.32	10.5-(11.0)-11.5	1929	@	50	32.91		
315/35ZR20 XL	110W	207110	7.2	28.62	12.40	10.5-(11.0)-12.5	2337	@	50	35.53		

†Indicates U.T.Q.G.rating 140 AA A. (XL) Indicates Extra Load.



# NT555<sup>®</sup> GR

## SUMMER ULTRA HIGH PERFORMANCE TIRE



\*Ratings based on comparison to other Nitto product in the segment

PERFORMANCE RATED: **W** UTQG TREADWEAR: **320** UTQG TREADWEAR FOR SELECT SIZES: **200** TRACTION: **AA** TEMPERATURE: **A**



### ■ LARGER BLOCKS FOR 275MM SECTION WIDTH AND GREATER

Enhanced\* traction for rear tires of vehicles with staggered fitments and high horsepower. Tire sizes with 275mm and greater section width have larger tread blocks in comparison to tires with 265mm and narrower section width.

### ■ TWIN CENTER RIBS

Increased\* dry traction and straight-line stability.

### ■ LARGE TAPERED BLOCK

Increased\* grip capabilities and better cornering stability.

### ■ 4-CIRCUMFERENTIAL GROOVES

Center grooves and shoulder grooves aid water evacuation and wet handling.

### ■ REINFORCED SHOUDLER TREADBLOCKS

Improves\* dry and wet cornering grip.

### ■ HIGH STIFFNESS AND HIGH SILICA COMPOUND

A special bonding agent increase the interaction between all the compound elements to reinforce bonds for higher compound rigidity during cornering, resulting in better handling capabilities in both wet and dry.

# SIZE AND SPECIFICATIONS

**WHEEL**  
 SUMMER ULTRA HIGH PERFORMANCE TIRE

WHEEL DIAMETER	TIRE SIZE	STOCK NUMBER	TREAD DEPTH (1/32")	INFLATED DIMENSIONS		APPROVED RIM (Measuring Rim) Width (in.)	MAXIMUM		WEIGHT (lbs.)		
				Overall Dia. (in.)	Overall Width (in.)		Load (lbs.)	Press (PSI)			
17"	225/45ZR17 XL	94W	211240	10.2	24.96	8.86	7.0-(7.5)-8.5	1477	@ 50	22.78	
	225/50ZR17 XL	98W	213990	10.2	25.91	9.17	6.0-(7.0)-8.0	1653	@ 50	25.51	
	235/45ZR17 XL	97W	211370	10.2	25.35	9.29	7.5-(8.0)-9.0	1609	@ 50	25.57	
	245/45ZR17 XL	99W	211030	10.2	25.67	9.57	7.5-(8.0)-9.0	1709	@ 50	26.09	
	255/40ZR17 XL	98W	211390	10.2	25.04	10.24	8.5-(9.0)-10.0	1653	@ 50	26.90	
	255/45ZR17 XL	102W	211360	10.2	26.06	10.04	8.0-(8.5)-9.5	1874	@ 50	28.13	
	255/50ZR17	101W	211230	10.2	27.09	10.43	7.0-(8.0)-9.0	1819	@ 51	29.32	
	275/40ZR17 XL	102W	211320	10.2	25.67	10.94	9.0-(9.5)-11.0	1874	@ 50	29.35	
	275/50ZR17 XL	108W	214020	9.8	27.87	11.18	7.5-(8.5)-9.5	2205	@ 50	33.47	
	285/40ZR17 XL	104W	211380	10.2	25.98	11.42	9.5-(10.0)-11.0	1984	@ 50	30.98	
	315/35ZR17 XL	106W	211340	11.0	25.67	12.60	10.5-(11.0)-12.5	2094	@ 50	31.60	
	18"	225/40ZR18 XL	92W	211180	11.0	25.08	9.06	7.5-(8.0)-9.0	1389	@ 50	23.89
225/45ZR18 XL		95W	214000	10.2	25.94	8.86	7.0-(7.5)-8.5	1521	@ 50	24.91	
235/40ZR18 XL		95W	211410	10.2	25.39	9.49	8.0-(8.5)-9.5	1521	@ 50	25.57	
235/50ZR18 XL		101W	211120	10.2	27.28	9.65	6.5-(7.5)-8.5	1819	@ 50	27.86	
245/40ZR18 XL		97W	211150	11.0	25.71	9.76	8.0-(8.5)-9.5	1609	@ 50	26.96	
245/45ZR18 XL		100W	211130	11.0	26.65	9.57	7.5-(8.0)-9.0	1764	@ 50	27.37	
255/35ZR18 XL		94W	211280	11.0	25.00	10.24	8.5-(9.0)-10.0	1477	@ 50	26.61	
255/45ZR18 XL		103W	211040	11.0	27.05	10.04	8.0-(8.5)-9.5	1929	@ 50	29.81	
265/35ZR18 XL		97W	211350	10.2	25.31	10.67	9.0-(9.5)-10.5	1609	@ 50	27.12	
275/35ZR18 XL		99W	211160	10.2	25.55	10.94	9.0-(9.5)-11.0	1709	@ 50	29.11	
275/40ZR18 XL		103W	211050	11.0	26.65	10.94	9.0-(9.5)-11.0	1929	@ 50	31.22	
285/35ZR18 XL		101W	211430	10.2	25.87	11.42	9.5-(10.0)-11.0	1819	@ 50	30.42	
285/40ZR18 XL		105W	211330	11.0	26.97	11.42	9.5-(10.0)-11.0	2039	@ 50	31.64	
295/40ZR18		103W	211260	11.0	27.28	11.85	10.0-(10.5)-11.5	1929	@ 51	33.55	
295/45ZR18 XL		112W	211400	10.2	28.46	11.65	9.5-(10.0)-11.0	2469	@ 50	36.07	
†P315/40ZR18			215750	9.1	27.91	12.60	10.5-(11.0)-12.5	1874	@ 44	35.05	
19"	235/35ZR19 XL	91W	211730	10.2	25.47	9.49	8.0-(8.5)-9.5	1356	@ 50	23.81	
	245/35ZR19 XL	93W	211790	10.2	25.79	9.76	8.0-(8.5)-9.5	1433	@ 50	25.79	
	245/45ZR19 XL	102W	211170	11.0	27.68	9.57	7.5-(8.0)-9.0	1874	@ 50	29.65	
	255/40ZR19 XL	100W	211080	11.0	27.05	10.24	8.5-(9.0)-10.0	1764	@ 50	28.82	
	265/35ZR19 XL	98W	211780	10.2	26.34	10.67	9.0-(9.5)-10.5	1653	@ 50	29.54	
	265/40ZR19 XL	102W	211250	10.2	27.36	10.67	9.0-(9.5)-10.5	1874	@ 50	31.09	
	275/30ZR19 XL	96W	211800	10.2	25.55	10.94	9.0-(9.5)-10.0	1565	@ 50	28.66	
	275/35ZR19 XL	100W	211760	10.2	26.57	10.94	9.0-(9.5)-11.0	1764	@ 50	29.54	
	275/40ZR19 XL	105W	211090	11.0	27.68	10.94	9.0-(9.5)-11.0	2039	@ 50	32.84	
	285/35ZR19 XL	103W	211190	10.2	26.89	11.42	9.5-(10.0)-11.0	1929	@ 50	32.16	
	295/35R19 XL	104W	212390	10.2	27.13	11.85	10.0-(10.5)-11.5	1984	@ 50	32.85	
	305/30ZR19 XL	102W	211750	10.2	26.26	12.32	10.5-(11.0)-11.5	1874	@ 50	32.19	
	305/35ZR19 XL	106W	211300	10.2	27.44	12.32	10.0-(11.0)-12.0	2094	@ 50	35.30	
	315/30R19 XL	104W	212400	10.2	26.50	12.60	10.5-(11.0)-11.5	1984	@ 50	33.07	
	20"	225/35ZR20 XL	90W	211840	10.2	26.22	9.06	7.5-(8.0)-9.0	1323	@ 50	24.60
		235/35ZR20 XL	92W	211720	10.2	26.46	9.49	8.0-(8.5)-9.5	1389	@ 50	25.35
245/30ZR20 XL		90W	211860	10.2	25.83	9.76	8.0-(8.5)-9.0	1323	@ 50	25.22	
245/35ZR20 XL		95W	211060	11.0	26.77	9.76	8.0-(8.5)-9.5	1521	@ 50	28.21	
245/40ZR20 XL		99W	211450	10.2	27.72	9.76	8.0-(8.5)-9.5	1709	@ 50	28.88	
245/45ZR20 XL		103W	211070	11.0	28.66	9.57	7.5-(8.0)-9.0	1929	@ 50	30.38	
255/35ZR20 XL		97W	211010	11.0	27.01	10.24	8.5-(9.0)-10.0	1609	@ 50	29.16	
255/45ZR20 XL		105W	211140	10.2	29.06	10.04	8.0-(8.5)-9.5	2039	@ 50	31.97	
265/35ZR20 XL		99W	211110	11.0	27.32	10.67	9.0-(9.5)-10.5	1709	@ 50	31.17	
275/30ZR20 XL		97W	211310	11.0	26.54	10.94	9.0-(9.5)-10.0	1609	@ 50	30.74	
275/35ZR20 XL		102W	211020	11.0	27.56	10.94	9.0-(9.5)-11.0	1874	@ 50	32.01	
275/40ZR20 XL		106W	211100	11.0	28.66	10.94	9.0-(9.5)-11.0	2094	@ 50	33.36	
285/30ZR20 XL		99W	211210	11.0	26.77	11.42	9.5-(10.0)-10.5	1709	@ 50	32.30	
285/35ZR20 XL		104W	211440	10.2	27.87	11.42	9.5-(10.0)-11.0	1984	@ 50	33.07	
295/35ZR20 XL		105W	211290	11.0	28.11	11.85	10.0-(10.5)-11.5	2039	@ 50	34.35	
295/40ZR20 XL		110W	211270	11.0	29.29	11.85	10.0-(10.5)-11.5	2337	@ 50	35.94	
305/30ZR20 XL		103W	211220	11.0	27.24	12.32	10.5-(11.0)-11.5	1929	@ 50	34.24	
305/35ZR20 XL		107W	211420	10.2	28.43	12.32	10.0-(11.0)-12.0	2149	@ 50	35.27	
315/30ZR20 XL		104W	211740	10.2	27.48	12.60	10.5-(11.0)-11.5	1984	@ 50	35.49	
315/35ZR20 XL		110W	211200	10.2	28.66	12.60	10.5-(11.0)-12.5	2337	@ 50	37.35	
22"	265/35ZR22 XL	102W	211770	10.2	29.33	10.67	9.0-(9.5)-10.5	1874	@ 50	34.39	
	285/35R22 XL	106W	212380	10.2	29.88	11.42	9.5-(10.0)-11.0	2094	@ 50	35.71	
	295/30ZR22 XL	103W	211850	10.2	29.02	11.85	10.0-(10.5)-11.0	1929	@ 50	36.99	

†Indicates U.T.Q.G.rating 200 AA A. (XL) Indicates Extra Load.



# INVO®

## SUMMER ULTRA HIGH PERFORMANCE TIRE



\*Ratings based on comparison to other Nitto product in the segment

PERFORMANCE RATED: **WY** UTQG TREADWEAR FOR W: **260** UTQG TREADWEAR FOR Y: **220** TRACTION: **AA** TEMPERATURE: **A**



### ■ DRY PERFORMANCE

The outer shoulder is made of large reinforced tread blocks, which increase the amount of surface area contacting the road. This assists with dry performance and cornering.

### ■ WET PERFORMANCE

The large twin circumferential grooves quickly channel water away from the tire so you maintain better road traction in wet weather. 3D Multiwave sipes were implemented to provide greater wet traction while solidifying the block to help reduce uneven wear.

### ■ HANDLING CAPACITY

The solid inner rib provides continuous contact with the road to increase the tire's rigidity and stability. This rigid design helps keep you connected to the road during hard braking and acceleration.

### ■ ADVANCED NOISE REDUCTION

Tire noise is amplified when vibrations of the same frequency are repeated, magnifying their intensity. Nitto broke up these repetitive noises through calculated variations in the size and position of repeating tread blocks, creating offset frequencies that reduce tire noise.

# SIZE AND SPECIFICATIONS



SUMMER ULTRA HIGH PERFORMANCE TIRE

WHEEL DIAMETER	TIRE SIZE	STOCK NUMBER	TREAD DEPTH (1/32")	INFLATED DIMENSIONS		APPROVED RIM (Measuring Rim) Width (in.)	MAXIMUM			WEIGHT (lbs.)	
				Overall Dia. (in.)	Overall Width (in.)		Load (lbs.)	@	Press (PSI)		
17"	225/45R17	91W	202900	10.0	24.96	8.98	7.0-(7.5)-8.5	1356	@	51	23.14
	235/45ZR17	94W	203620	10.0	25.51	9.33	7.5-(8.0)-9.0	1477	@	51	25.24
	245/40ZR17 XL	95Y	203830	10.3	24.72	9.69	8.0-(8.5)-9.5	1521	@	50	23.58
	245/45ZR17	95W	203630	10.0	25.79	9.61	7.5-(8.0)-9.0	1521	@	51	26.79
	P255/50ZR17	100W	203310	10.0	27.05	10.31	7.0-(8.0)-9.0	1764	@	51	31.88
18"	225/40R18 XL	92W	202940	10.0	25.08	8.98	7.5-(8.0)-9.0	1389	@	50	23.02
	225/45R18	91W	203280	10.0	25.98	8.94	7.0-(7.5)-8.5	1356	@	51	24.82
	235/40R18	91W	202950	10.0	25.39	9.49	8.0-(8.5)-9.5	1356	@	51	24.50
	245/40R18 XL	97W	203810	10.3	25.91	9.65	8.0-(8.5)-9.5	1609	@	50	25.77
	245/45R18	96W	203340	10.0	26.69	9.65	7.5-(8.0)-9.0	1565	@	51	29.10
	245/50ZR18 XL	104W	203450	10.0	27.80	9.72	7.0-(7.5)-8.5	1984	@	50	29.82
	255/35R18 XL	94W	203320	10.0	24.96	9.96	8.5-(9.0)-10.0	1477	@	50	24.36
	255/40ZR18 XL	99Y	204500	10.3	26.06	10.20	8.5-(9.0)-10.0	1709	@	50	25.71
	255/45R18	99W	203290	9.9	27.05	10.04	8.0-(8.5)-9.5	1709	@	51	30.18
	265/35R18 XL	97W	203610	10.0	25.28	10.39	9.0-(9.5)-10.5	1609	@	50	25.61
	275/35ZR18 XL	99W	203260	10.0	25.55	10.71	9.0-(9.5)-11.0	1709	@	50	27.73
	275/40ZR18	99W	203170	10.0	26.65	10.94	9.0-(9.5)-11.0	1709	@	51	30.51
295/35ZR18	99W	203330	10.0	26.02	11.54	10.0-(10.5)-11.5	1709	@	51	31.85	
19"	225/35R19 XL	88Y	203720	10.3	25.35	8.82	7.5-(8.0)-9.0	1235	@	50	23.28
	225/40ZR19 XL	93Y	203550	10.0	26.18	8.90	7.5-(8.0)-9.0	1433	@	50	23.66
	225/45ZR19 XL	96W	203560	10.0	26.97	8.94	7.0-(7.5)-8.5	1565	@	50	25.93
	235/35ZR19 XL	91W	203120	10.0	25.51	9.37	8.0-(8.5)-9.5	1356	@	50	24.26
	235/35ZR19 XL	91Y	203460	10.0	25.47	9.49	8.0-(8.5)-9.5	1356	@	50	22.99
	245/35R19 XL	93W	203160	10.0	25.79	9.57	8.0-(8.5)-9.5	1433	@	50	25.88
	245/35ZR19 XL	93Y	203540	10.0	25.79	9.76	8.0-(8.5)-9.5	1433	@	50	24.30
	245/40ZR19 XL	98W	203210	10.0	26.73	9.84	8.0-(8.5)-9.5	1653	@	50	28.94
	255/30R19 XL	91Y	203730	10.3	25.12	9.96	8.5-(9.0)-9.5	1356	@	50	24.00
	255/35ZR19 XL	96Y	202910	10.0	26.10	10.00	8.5-(9.0)-10.0	1565	@	50	26.08
	255/40ZR19 XL	100Y	203590	9.1	27.05	10.24	8.5-(9.0)-10.0	1764	@	50	27.96
	265/30ZR19 XL	93W	203650	10.0	25.31	10.39	9.0-(9.5)-10.0	1433	@	50	25.29
	275/30ZR19 XL	96Y	203510	10.0	25.59	10.63	9.0-(9.5)-10.0	1565	@	50	26.14
	275/35ZR19 XL	100W	203580	10.0	26.57	10.83	9.0-(9.5)-11.0	1764	@	50	29.13
	285/30ZR19 XL	98W	203220	10.0	25.79	11.34	9.5-(10.0)-10.5	1653	@	50	29.03
	285/35ZR19	99W	203270	10.0	26.73	11.30	9.5-(10.0)-11.0	1709	@	51	30.42
	305/30ZR19 XL	102Y	202970	10.0	26.22	12.36	10.5-(11.0)-11.5	1874	@	50	32.86
	315/25ZR19 XL	98Y	203500	10.0	25.28	12.48	11.0-(11.5)-12.0	1653	@	50	30.40
	325/30ZR19 XL	105Y	203660	10.0	26.77	12.91	11.0-(11.5)-12.0	2039	@	50	35.39
	345/30ZR19	105Y	203300	10.0	27.17	13.35	11.5-(12.0)-12.5	2039	@	51	37.27
20"	235/30ZR20 XL	88Y	203480	10.0	25.71	9.25	8.5-(8.5)-8.5	1235	@	50	22.14
	245/30ZR20 XL	90W	203360	10.0	25.83	9.53	8.0-(8.5)-9.0	1323	@	50	25.28
	245/35R20 XL	95W	202920	10.0	26.77	9.53	8.0-(8.5)-9.5	1521	@	50	28.11
	245/40ZR20 XL	99W	203490	10.0	27.76	9.65	8.0-(8.5)-9.5	1709	@	50	28.88
	245/45ZR20	99W	203140	10.0	28.66	9.65	7.5-(8.0)-9.0	1709	@	51	31.79
	255/30ZR20 XL	92Y	203250	10.0	26.14	10.00	8.5-(9.0)-9.5	1389	@	50	24.71
	255/35ZR20 XL	97W	202930	10.0	27.01	9.92	8.5-(9.0)-10.0	1609	@	50	28.95
	255/45ZR20	101W	202990	10.0	29.02	10.12	8.0-(8.5)-9.5	1819	@	51	33.40
	275/25ZR20 XL	91Y	203670	10.0	25.39	10.83	10.0-(10.0)-10.0	1356	@	50	26.42
	275/30R20 XL	97W	203570	10.0	26.50	10.63	9.0-(9.5)-10.0	1609	@	50	26.46
	275/35ZR20 XL	102W	203420	10.0	27.60	10.67	9.0-(9.5)-11.0	1874	@	50	30.75
	275/40R20 XL	106W	203180	10.0	28.62	10.94	9.0-(9.5)-11.0	2094	@	50	33.97
	285/25ZR20 XL	93Y	203850	9.1	25.59	11.61	10.5-(10.5)-10.5	1433	@	50	26.66
	285/30ZR20 XL	99W	203130	10.0	26.73	11.34	9.5-(10.0)-10.5	1709	@	50	31.09
	295/25ZR20 XL	95W	203470	10.0	25.79	11.50	10.0-(10.5)-11.0	1521	@	50	27.51
	295/35ZR20	101W	203400	10.0	28.11	11.69	10.0-(10.5)-11.5	1819	@	51	36.00
	305/25ZR20 XL	97Y	203230	10.0	25.94	12.05	10.5-(11.0)-11.5	1609	@	50	29.24
	315/35ZR20	106W	203600	10.0	28.62	12.40	10.5-(11.0)-12.5	2094	@	51	38.00
	345/25ZR20	100Y	203370	10.0	26.65	13.66	12.0-(12.5)-13.0	1764	@	51	34.71
	21"	245/35ZR21 XL	96W	203520	10.0	27.72	9.61	8.0-(8.5)-9.5	1565	@	50
22"	245/30ZR22 XL	92W	203410	10.0	27.83	9.61	8.0-(8.5)-9.0	1389	@	50	26.96
	255/30ZR22 XL	95W	203380	10.0	28.03	10.08	8.5-(9.0)-9.5	1521	@	50	29.34
	255/35ZR22 XL	99W	202960	10.0	29.06	9.92	8.5-(9.0)-10.0	1709	@	50	30.98
	265/30ZR22 XL	97W	203150	10.0	28.39	10.55	9.0-(9.5)-10.0	1609	@	50	30.09
	275/30ZR22 XL	99W	203430	10.0	28.58	10.67	9.0-(9.5)-10.0	1709	@	50	30.06
	285/30ZR22 XL	101W	203440	10.0	28.82	11.22	9.5-(10.0)-10.5	1819	@	50	33.31
295/25R22 XL	97W	203240	10.0	27.83	11.57	10.0-(10.5)-11.0	1609	@	50	33.05	
24"	275/25ZR24 XL	96W	203390	10.0	29.45	10.63	10.0-(10.0)-10.0	1565	@	50	29.57

(XL) Indicates Extra Load.



# Motivo®

ALL-SEASON ULTRA HIGH PERFORMANCE TIRE



\*Ratings based on comparison to other Nitto product in the segment

PERFORMANCE RATED: **WY**    UTQG TREADWEAR: **560**    TRACTION: **A**    TEMPERATURE: **A**

**LIMITED TREADWEAR WARRANTY** | **60K MILES\***  
FOR W AND Y SIZES

\*Please refer to Nitto's warranty manual for full details.

### ■ ADVANCED SIPING TECHNOLOGY

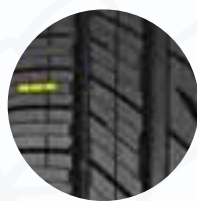
Sipes are thin slits in a treadblock that cut through water on the road surface to gain traction. Nitto's 3D Multiwave sipes feature an interlocking ripple design, which allows the sipes to "lock" together while braking to act like a continuous tread block and provides traction while accelerating.

### ■ DRY PERFORMANCE

The exterior tread features larger size blocks which increase the amount of surface area contacting the road.

### ■ WET PERFORMANCE

Four wide, deep circumferential grooves and streamlined, open lateral grooves improve water evacuation for increased wet handling and traction.



### ■ ALIGNMENT INDICATORS

Nitto's alignment indicators are a service feature that visually show how your tires are wearing. They can also alert you to wear issues before they become big problems.

# SIZE AND SPECIFICATIONS

**MOOTHO**  
ALL-SEASON ULTRA HIGH PERFORMANCE TIRE

WHEEL DIAMETER	TIRE SIZE	STOCK NUMBER	TREAD DEPTH (1/32")	INFLATED DIMENSIONS		APPROVED RIM (Measuring Rim) Width (in.)	MAXIMUM			WEIGHT (lbs.)	
				Overall Dia. (in.)	Overall Width (in.)		Load (lbs.)	@	Press (PSI)		
17"	205/50ZR17 XL	93W	210000	10.3	25.16	8.46	5.5-(6.5)-7.5	1433	@	50	21.28
	215/45ZR17 XL	91W	210030	10.3	24.61	8.54	7.0-(7.0)-8.0	1356	@	50	22.66
	215/50ZR17 XL	95W	210010	10.3	25.47	9.02	6.0-(7.0)-7.5	1521	@	50	24.54
	215/55ZR17 XL	98W	210150	10.3	26.26	8.98	6.0-(7.0)-7.5	1653	@	50	25.86
	225/45ZR17 XL	94W	210130	10.3	24.92	9.02	7.0-(7.5)-8.5	1477	@	50	23.80
	225/50ZR17 XL	98W	210020	10.3	25.87	9.33	6.0-(7.0)-8.0	1653	@	50	25.75
	225/55ZR17 XL	101W	210160	10.3	26.61	9.21	6.0-(7.0)-8.0	1819	@	50	26.84
	235/45ZR17 XL	97W	210040	10.3	25.35	9.45	7.5-(8.0)-9.0	1609	@	50	24.93
	235/55ZR17 XL	103W	210170	10.3	27.17	9.88	6.5-(7.5)-8.5	1929	@	50	27.76
	245/40ZR17 XL	95W	210100	10.3	24.76	9.88	8.0-(8.5)-9.5	1521	@	50	25.12
	245/45ZR17 XL	99W	210050	10.3	25.67	9.80	7.5-(8.0)-9.0	1709	@	50	26.05
	245/50ZR17	99W	210140	10.3	26.69	10.35	7.0-(7.5)-8.5	1709	@	51	27.48
	255/40ZR17 XL	98W	210110	10.3	25.04	10.35	8.5-(9.0)-10.0	1653	@	50	26.44
	275/40ZR17	98W	210120	10.3	25.67	11.06	9.0-(9.5)-11.0	1653	@	51	29.37
	315/35ZR17XL	106W	210560	10.0	25.67	12.60	10.5-(11.0)-12.5	2094	@	50	31.16
18"	225/40ZR18 XL	92W	210060	10.3	25.16	9.09	7.5-(8.0)-9.0	1389	@	50	23.22
	225/45ZR18 XL	95Y	210070	10.0	25.98	8.98	7.0-(7.5)-8.5	1521	@	50	24.73
	225/50ZR18 XL	99Y	210250	10.0	26.89	9.33	6.0-(7.0)-8.0	1709	@	50	26.91
	235/40ZR18 XL	95W	210200	10.3	25.47	9.57	8.0-(8.5)-9.5	1521	@	50	25.01
	235/45ZR18 XL	98W	210230	10.3	26.38	9.45	7.5-(8.0)-9.0	1653	@	50	27.01
	235/50ZR18 XL	101W	210080	10.3	27.36	9.76	6.5-(7.5)-8.5	1819	@	50	28.64
	235/55ZR18 XL	104W	210260	10.3	28.07	9.69	6.5-(7.5)-8.5	1984	@	50	30.20
	245/40ZR18 XL	97Y	210210	10.0	25.67	9.80	8.0-(8.5)-9.5	1609	@	50	25.76
	245/45ZR18 XL	100Y	210090	10.0	26.73	9.61	7.5-(8.0)-9.0	1764	@	50	28.19
	245/55ZR18	103W	210270	10.3	28.54	10.00	7.0-(7.5)-8.5	1929	@	51	31.97
	255/35ZR18 XL	94W	210180	10.3	25.00	10.24	8.5-(9.0)-10.0	1477	@	50	25.43
	255/40ZR18 XL	99W	210220	10.3	25.98	10.24	8.5-(9.0)-10.0	1709	@	50	26.94
	255/45ZR18 XL	103W	210240	10.3	26.97	10.16	8.0-(8.5)-9.5	1929	@	50	29.77
	255/55ZR18 XL	109W	210280	10.3	28.98	10.47	7.0-(8.0)-9.0	2271	@	50	34.71
	275/35ZR18 XL	99Y	210190	10.0	25.63	10.79	9.0-(9.5)-11.0	1709	@	50	26.64
19"	225/40ZR19 XL	93Y	210330	10.0	26.10	9.06	7.5-(8.0)-9.0	1433	@	50	24.13
	225/45ZR19 XL	96Y	210350	10.0	26.97	8.86	7.0-(7.5)-8.5	1565	@	50	25.84
	235/35ZR19 XL	91W	210300	10.3	25.51	9.49	8.0-(8.5)-9.5	1356	@	50	24.95
	245/35ZR19 XL	93W	210550	10.3	25.79	9.76	8.0-(8.5)-9.5	1433	@	50	26.02
	245/40ZR19 XL	98Y	210340	10.0	26.77	9.80	8.0-(8.5)-9.5	1653	@	50	26.84
	245/45ZR19 XL	102Y	209990	10.0	27.68	9.57	7.5-(8.0)-9.0	1874	@	50	29.44
	245/50ZR19 XL	105W	210370	10.3	28.66	9.84	7.0-(7.5)-8.5	2039	@	50	30.68
	255/35ZR19 XL	96Y	210310	10.0	26.02	10.24	8.5-(9.0)-10.0	1565	@	50	25.47
	255/45ZR19 XL	104W	209980	10.3	28.07	10.04	8.0-(8.5)-9.5	1984	@	50	30.56
	255/50ZR19 XL	107W	210380	10.3	29.02	10.47	7.0-(8.0)-9.0	2149	@	50	32.82
	255/55ZR19 XL	111W	210390	10.3	29.96	10.47	7.0-(8.0)-9.0	2403	@	50	35.03
	275/30ZR19 XL	96W	210290	10.3	25.51	10.71	9.0-(9.5)-10.0	1565	@	50	28.21
	275/35ZR19 XL	100Y	210320	10.0	26.54	10.87	9.0-(9.5)-11.0	1764	@	50	30.21
	275/45ZR19 XL	108Y	210360	10.0	28.78	10.75	8.5-(9.0)-10.5	2205	@	50	32.64
	275/55ZR19	111W	210400	10.3	31.38	11.61	7.5-(8.5)-9.5	2403	@	51	38.69
20"	245/35ZR20 XL	95W	210420	10.3	26.77	9.76	8.0-(8.5)-9.5	1521	@	50	27.23
	245/40ZR20 XL	99Y	210460	10.0	28.03	10.16	8.0-(8.5)-9.5	1709	@	50	28.67
	245/45ZR20 XL	103Y	210480	10.0	28.74	9.57	7.5-(8.0)-9.0	1929	@	50	31.26
	255/35ZR20 XL	97W	210430	10.3	27.09	10.04	8.5-(9.0)-10.0	1609	@	50	28.38
	255/45ZR20 XL	105Y	210490	10.0	29.29	10.08	8.0-(8.5)-9.5	2039	@	50	32.66
	275/30ZR20 XL	97W	210410	10.3	26.50	10.83	9.0-(9.5)-10.0	1609	@	50	29.29
	275/35ZR20 XL	102Y	210440	10.0	27.87	11.38	9.0-(9.5)-11.0	1874	@	50	31.57
	275/40ZR20 XL	106Y	210470	10.0	28.78	10.83	9.0-(9.5)-11.0	2094	@	50	34.05
	295/30ZR20 XL	101W	209960	10.3	27.01	11.85	10.0-(10.5)-11.0	1819	@	50	32.62
	315/35ZR20 XL	110Y	210450	10.0	28.54	12.52	10.5-(11.0)-12.5	2337	@	50	36.85

(XL) Indicates Extra Load.



# NEO GEN<sup>®</sup>

ALL-SEASON ULTRA HIGH PERFORMANCE TIRE



\*Ratings based on comparison to other Nitto product in the segment

PERFORMANCE RATED: **VW**      UTQG TREADWEAR: **280**      TRACTION: **AA**      TEMPERATURE: **A**



### ■ ENHANCED CORNERING

The large outer shoulder blocks provide increased surface contact and provide improved traction while cornering.

### ■ REDUCED WEAR

The inner shoulder is made from one continuous block, which adds stability and reduces tread flex. This helps in reducing irregular inner shoulder wear commonly associated with vehicles with negative camber.

### ■ WET TRACTION

Deep circumferential grooves combined with the slanted three-dimensional tread blocks evacuate water. This helps maintain contact with the road and provides increased wet traction.

### ■ ADVANCED SIPING TECHNOLOGIES

3D Multiwave sipes are cut into interlocking ripples instead of straight lines so they provide additional wet traction while keeping the block firm to help reduce irregular wear.



## SIZE AND SPECIFICATIONS

ALL-SEASON ULTRA HIGH PERFORMANCE TIRE

NEO GEN

WHEEL DIAMETER	TIRE SIZE	STOCK NUMBER	TREAD DEPTH (1/32")	INFLATED DIMENSIONS		APPROVED RIM (Measuring Rim) Width (in.)	MAXIMUM		WEIGHT (lbs.)	
				Overall Dia. (in.)	Overall Width (in.)		Load (lbs.)	@ Press (PSI)		
15"	205/50R15 XL	89V	185290	9.7	23.07	8.39	5.5-(6.5)-7.5	1279	@ 50	20.20
16"	205/40R16 XL	83V	185000	9.7	22.48	8.58	7.0-(7.5)-8.0	1074	@ 50	18.29
	205/45R16 XL	87V	185010	9.7	23.35	8.31	6.5-(7.0)-7.5	1201	@ 50	19.78
	205/50R16 XL	91V	185020	9.7	24.02	8.43	5.5-(6.5)-7.5	1356	@ 50	22.18
17"	205/40ZR17 XL	84W	185030	9.7	23.54	8.58	7.0-(7.5)-8.0	1102	@ 50	19.65
	205/45ZR17 XL	88W	185350	9.7	24.33	8.23	6.5-(7.0)-7.5	1235	@ 50	21.33
	215/40ZR17 XL	87W	185050	9.8	23.90	8.86	7.0-(7.5)-8.5	1201	@ 50	20.85
	215/45ZR17 XL	91W	185060	9.8	24.76	8.43	7.0-(7.0)-8.0	1356	@ 50	22.43
	225/45ZR17 XL	94W	185070	10.0	25.08	8.90	7.0-(7.5)-8.5	1477	@ 50	24.21
	225/50ZR17 XL	98W	185260	10.0	25.91	9.06	6.0-(7.0)-8.0	1653	@ 50	25.10
	235/50ZR17 XL	100W	185270	10.1	26.22	9.53	6.5-(7.5)-8.5	1764	@ 50	27.21
18"	205/40ZR18 XL	86W	185090	9.7	24.53	8.58	7.0-(7.5)-8.0	1168	@ 50	21.36
	215/35ZR18 XL	84W	185100	9.8	24.02	8.58	7.0-(7.5)-8.5	1102	@ 50	20.62
	215/40ZR18 XL	89W	185110	9.8	24.76	8.70	7.0-(7.5)-8.5	1279	@ 50	21.20
	225/40ZR18 XL	92W	185130	10.0	25.12	9.06	7.5-(8.0)-9.0	1389	@ 50	23.00
	235/40ZR18 XL	95W	185230	10.1	25.43	9.49	8.0-(8.5)-9.5	1521	@ 50	23.36
	245/40ZR18 XL	97W	185250	10.2	25.75	9.65	8.0-(8.5)-9.5	1609	@ 50	25.21
19"	215/35ZR19 XL	85W	185140	9.8	24.88	8.58	7.0-(7.5)-8.5	1135	@ 50	22.37
	245/35ZR19 XL	93W	185210	10.2	25.79	9.65	8.0-(8.5)-9.5	1433	@ 50	23.80
	275/35ZR19 XL	100W	185220	10.6	26.54	10.75	9.0-(9.5)-11.0	1764	@ 50	29.63
20"	225/30ZR20 XL	85W	185170	10.0	25.35	8.82	8.0-(8.0)-8.0	1135	@ 50	20.53
	225/35ZR20 XL	90W	185150	10.0	26.42	9.02	7.5-(8.0)-9.0	1323	@ 50	24.16
	235/30ZR20 XL	88W	185310	10.2	25.71	9.45	8.5-(8.5)-8.5	1235	@ 50	22.69
	245/30ZR20 XL	90W	185180	10.2	25.98	9.53	8.0-(8.5)-9.0	1323	@ 50	23.94
	305/25ZR20 XL	97W	185300	10.6	25.98	12.32	10.5-(11.0)-11.5	1609	@ 50	29.84
22"	235/30ZR22 XL	90W	185340	10.2	27.76	9.49	8.5-(8.5)-8.5	1323	@ 50	25.93

(XL) Indicates Extra Load.



# NT01™

D.O.T.-COMPLIANT COMPETITION  
ROAD COURSE TIRE



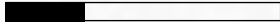
DRY PERFORMANCE



QUIETNESS



WET PERFORMANCE



RIDE COMFORT



PERFORMANCE RATED: **Z** UTQG TREADWEAR: **100** TRACTION: **AA** TEMPERATURE: **A**

\*Ratings based on comparison to other Nitto product in the segment

The NT01 is recommended for dry competition use.  
(See safety warnings on page 41 for more details.)



## ■ COMPETITION PERFORMANCE

The construction design is enhanced for consistency and stability under racing conditions. The large shoulder blocks maximize the surface area contacting the road. This large contact patch increases dry performance while accelerating, braking and cornering.

## ■ HANDLING STABILITY

High modulus rayon carcass, reinforced sidewall and the advanced body construction combine to increase stability during braking, cornering and straight-aways.

## ■ SPECIALIZED RACE COMPOUND

The road race compound balances dry traction, consistency, heat cycle performance, heat resistance and longevity to provide fast and consistent lap times throughout the life of the tire.

## ■ DRY PERFORMANCE

The NT01 offers varying degrees of competition performance. The tire is molded at 6.3/32nds of an inch with large continuous tread blocks and sweeping lateral grooves. This set up can be easily shaved down to 3/32nds of an inch tread depth to function as a race slick with twin circumferential grooves.

## SIZE AND SPECIFICATIONS

**WALVOLE**<sup>TM</sup>  
 D.O.T.-COMPLIANT COMPETITION ROAD COURSE TIRE

WHEEL DIAMETER	TIRE SIZE	STOCK NUMBER	TREAD DEPTH (1/32")	INFLATED DIMENSIONS		APPROVED RIM (Measuring Rim) Width (in.)	MAXIMUM			WEIGHT Load (lbs.)	
				Dia. (in.)	Width (in.)		Load (lbs.)	@	Press (PSI)		
<b>14"</b>	205/55ZR14	85V	371090	6.3	22.76	8.31	5.5-(6.5)-7.5	1135	@	51	18.59
<b>15"</b>	205/50ZR15	86V	371080	6.3	22.95	8.35	5.5-(6.5)-7.5	1168	@	51	19.58
	225/45ZR15	87W	371160	6.3	22.95	8.86	7.0-(7.5)-8.5	1201	@	51	21.41
<b>16"</b>	245/50ZR16	97V	371070	6.3	25.47	9.96	7.0-(7.5)-8.5	1609	@	51	26.35
<b>17"</b>	205/40ZR17	80W	371040	6.3	23.46	8.35	7.0-(7.5)-8.0	992	@	51	18.64
	215/45ZR17	87W	371170	6.3	24.65	8.39	7.0-(7.0)-8.0	1201	@	51	22.30
	225/45ZR17	91W	371060	6.3	24.80	8.86	7.0-(7.5)-8.5	1356	@	51	23.57
	235/40ZR17	90W	371100	6.3	24.40	9.49	8.0-(8.5)-9.5	1323	@	51	23.52
	245/45ZR17	95W	371050	6.3	25.55	9.72	7.5-(8.0)-9.0	1521	@	51	27.03
	255/40ZR17	94W	371150	6.3	24.92	10.35	8.5-(9.0)-10.0	1477	@	51	26.26
	275/40ZR17	98W	371030	6.3	25.55	10.91	9.0-(9.5)-11.0	1653	@	51	28.25
315/35ZR17	102W	371570	6.3	25.67	12.60	10.5-(11.0)-12.5	1874	@	51	30.64	
<b>18"</b>	225/40ZR18	88W	371110	6.3	25.08	9.06	7.5-(8.0)-9.0	1235	@	51	23.80
	235/40ZR18	91W	371120	6.3	25.39	9.49	8.0-(8.5)-9.5	1356	@	51	24.99
	245/40ZR18	93W	371020	6.3	25.55	9.72	8.0-(8.5)-9.5	1433	@	51	25.65
	265/40ZR18 XL	101W	371520	6.3	26.34	10.67	9.0-(9.5)-10.5	1819	@	50	28.90
	275/35ZR18	95W	371010	6.3	25.55	10.91	9.0-(9.5)-11.0	1521	@	51	28.19
	275/40ZR18	99W	371130	6.3	26.65	10.94	9.0-(9.5)-11.0	1709	@	51	30.03
	305/35ZR18	101W	371180	6.3	26.42	12.32	10.0-(11.0)-12.0	1819	@	51	32.18
	315/30ZR18	98W	371000	6.3	25.35	12.60	10.5-(11.0)-11.5	1653	@	51	30.46
335/30ZR18	102W	371290	6.3	25.94	13.50	11.5-(12.0)-12.5	1874	@	51	32.32	
<b>19"</b>	235/35ZR19	87Y	371200	6.3	25.47	9.49	8.0-(8.5)-9.5	1201	@	51	24.64
	285/35ZR19 XL	103W	371530	6.3	26.89	11.42	9.5-(10.0)-11.0	1929	@	50	31.09
	305/30ZR19 XL	102Y	371270	6.3	26.26	12.32	10.5-(11.0)-11.5	1874	@	50	31.52
325/30ZR19	101W	371280	6.3	26.73	13.03	11.0-(11.5)-12.0	1819	@	51	32.30	
<b>20"</b>	255/40ZR20	97Y	371220	6.3	28.03	10.24	8.5-(9.0)-10.0	1609	@	51	29.59
	285/35ZR20	100 Y	371560	6.3	27.87	11.42	9.5-(10.0)-11.0	1764	@	51	33.07
	315/30ZR20	101Y	371210	6.3	27.48	12.60	10.5-(11.0)-11.5	1819	@	51	34.42

(XL) Indicates Extra Load.

# NT555<sup>®</sup>R II

D.O.T.-COMPLIANT COMPETITION  
DRAG RACE TIRE



UTQG TREADWEAR: 00

TRACTION: B

TEMPERATURE: B

\*Ratings based on comparison to other Nitto product in the segment



## ■ COMPETITION PERFORMANCE

The large solid center rib provides a continuous contact patch for dry traction.

## ■ HIGH-SPEED STABILITY

The enhanced sidewall construction combined with high-modulus bead filler and large shoulder blocks increase straight-line stability.

## ■ SPECIALIZED RACE COMPOUND

The drag racing-specific compound was engineered for increased traction at the starting line.

The NT555R II is recommended for dry competition use.  
(See safety warnings on page 41 for more details.)

## SIZE AND SPECIFICATIONS

**NISSAN**  
 D.O.T.-COMPLIANT COMPETITION DRAG RACE TIRE

WHEEL DIAMETER	TIRE SIZE	STOCK NUMBER	TREAD DEPTH (1/32")	INFLATED DIMENSIONS		APPROVED RIM (Measuring Rim) Width (in.)	MAXIMUM			WEIGHT Load (lbs.)	
				Di. (in.)	Width (in.)		Load (lbs.)	@	Press (PSI)		
<b>15"</b>	P275/50R15	101W	108610	6.3	25.87	11.18	7.5-(8.5)-9.5	1830	@	51	27.56
	P275/60R15	107V	107830	6.3	27.99	10.98	7.5-(8.0)-9.5	2149	@	51	30.42
	P325/50R15	112V	107840	6.3	27.83	13.23	9.0-(10.0)-11.5	2447	@	51	35.49
<b>16"</b>	245/50R16	97W	108720	6.3	25.67	9.96	7.0-(7.5)-8.5	1609	@	51	25.00
<b>17"</b>	245/45R17 XL	99W	108750	6.3	25.67	9.57	7.5-(8.0)-9.0	1709	@	50	24.91
	P275/40R17 LL	93W	108650	6.3	25.67	10.94	9.0-(9.5)-11.0	1433	@	44	26.23
	P305/45R17 LL	102W	108760	6.3	27.80	11.93	9.5-(10.0)-11.5	1874	@	44	31.09
	P315/35R17 LL	93W	108670	6.3	25.67	12.60	10.5-(11.0)-12.5	1433	@	44	30.42
	315/60R17	116W	111030	6.3	31.89	12.72	8.5-(9.5)-11.0	2756	@	51	42.11
<b>18"</b>	P275/40R18 LL	94W	108680	6.3	26.65	10.94	9.0-(9.5)-11.0	1477	@	44	27.56
	P285/40R18 LL	96W	108540	6.3	26.97	11.42	9.5-(10.0)-11.0	1565	@	44	28.44
	305/35R18 XL	105W	108700	6.3	26.42	12.32	10.0-(11.0)-12.0	2039	@	50	31.75
	P305/40R18	106W	108790	6.3	27.60	12.32	10.0-(11.0)-12.0	2094	@	51	31.28
	P305/45R18 LL	103W	108740	6.3	28.78	11.93	9.5-(10.0)-11.5	1929	@	44	33.51
	P315/40R18 LL	102W	108770	6.3	27.91	12.60	10.5-(11.0)-12.5	1874	@	44	31.57
	P335/30R18 LL	95W	108800	6.3	25.94	13.50	11.5-(12.0)-12.5	1521	@	44	32.06
<b>19"</b>	275/40R19	101W	108710	6.3	27.68	10.94	9.0-(9.5)-11.0	1819	@	51	28.66
	285/35R19 XL	103W	108780	6.3	26.89	11.42	9.5-(10.0)-11.0	1929	@	50	31.24
	305/35R19 XL	106W	108640	6.3	27.44	12.32	10.0-(11.0)-12.0	2094	@	50	33.07
	345/30R19	105W	108730	6.3	27.20	13.78	11.5-(12.0)-12.5	2039	@	51	32.85
<b>20"</b>	275/35R20 XL	102W	108690	6.3	27.56	10.94	9.0-(9.5)-11.0	1874	@	50	29.76
	275/40R20 XL	106W	108660	6.3	28.66	10.94	9.0-(9.5)-11.0	2094	@	50	30.64
	285/30R20 XL	99W	108550	6.3	26.77	11.42	9.5-(10.0)-10.5	1709	@	50	29.98
	295/35R20 XL	105W	108810	6.3	28.11	11.85	10.0-(10.5)-11.5	2039	@	50	33.97
	305/30R20 XL	103W	108560	6.3	27.24	12.32	10.5-(11.0)-11.5	1929	@	50	31.75
	305/35R20 XL	107W	108580	6.3	28.43	12.32	10.0-(11.0)-12.0	2149	@	50	34.17
	305/50R20	116V	108820	6.3	32.05	12.44	8.5-(9.5)-11.0	2756	@	51	44.25
	315/35R20	106W	108630	6.3	28.66	12.60	10.5-(11.0)-12.5	2094	@	51	34.61
<b>22"</b>	305/40R22 XL	114W	108570	6.3	31.61	12.32	10.0-(11.0)-12.0	2601	@	50	38.58

(LL) Indicates Light Load. (XL) Indicates Extra Load.



# Trail Grappler® SxS

PERFORMANCE SXS TIRE

### ■ TREAD BLOCK ARRANGEMENT

Using 3D computer simulation, Nitto's engineers were able to adopt the iconic Trail Grappler M/T pattern specifically for Side-by-Side use.

### ■ UNIFORM CONSTRUCTION

Nitto's proprietary, automated manufacturing system produces extraordinarily uniform tires. This creates an easy to balance tire and a smooth ride.

### ■ DURABILITY

Developed for the King of the Hammers UTV class race, and tested by the Hammers champions, the Trail Grappler SxS carries on the reputation for durability just like its 40" big brother.

### ■ MUD EVACUATION

The balanced void ratio efficiently removes mud and dirt from the tread to provide continuous off-road traction.

The Trail Grappler SxS is not for highway use.  
(See safety warnings on page 41 for more details.)

WHEEL DIAMETER	TIRE SIZE	STOCK NUMBER	TREAD DEPTH (1/32")	INFLATED DIMENSIONS		APPROVED RIM (Measuring Rim) Width (in.)	MAXIMUM			WEIGHT Load (lbs.)
				Dia. (in.)	Width (in.)		Load (lbs.)	@	Press (PSI)	
15"	30x9.50R15LT	207460	17.6	29.76	9.45	6.0-(7.5)-8.0	1565	@	35	38.89
	32x9.50R15LT	207700	17.6	31.77	9.45	6.0-(7.5)-8.0	1820	@	35	43.43
	33x9.50R15LT	207970	17.6	32.52	9.45	6.0-(7.5)-8.0	2205	@	35	45.64
	35x9.50R15LT	209500	17.6	34.53	9.45	6.0-(7.5)-8.0	2205	@	35	56.31

Technical specs are subject to change without notice.

For the latest information, please visit [www.nittotire.com](http://www.nittotire.com)

# Tire Safety

## Competition Tires

### **⚠ WARNING**

The Nitto® NT05R™, NT555R, NT555R11, and NT01 meet U.S. D.O.T. requirements, but they are not intended for highway use as the expected miles of wear from the racing compound is greatly reduced. These tires are not recommended for driving in wet weather conditions where there is risk of hydroplaning. Drivers should drive cautiously at reduced speeds in these conditions.

### **⚠ WARNING**


Use extreme care with any vehicle with large diameter tires and increased ground clearance due to the risk of rollover and possible injury or death. Use extreme caution and reduce speed during turns or abrupt maneuvers. Always wear seat belts, drive safely, and recognize that vehicle stability is reduced in off-road terrain. Do not drive a vehicle with an altered suspension unless you are familiar with its unique handling characteristics and are confident in your ability to maintain control under all driving conditions.

### **⚠ WARNING**

Serious injury may result from tire failure due to under-inflation and/or overloading. You must adjust your tires to the proper inflation pressure recommended by either the vehicle manufacturer's tire information placard, your authorized Nitto® Tire dealer, or contact Nitto® Tire at (888) 529-8200 for more information. Make sure to inspect your tires for any signs of damage before proceeding onto public roads.

Nitto® Tire does not endorse the operation of any vehicle in an unsafe or unlawful manner.

## Side-By-Side

<b>ATTENTION RETAILER: PROVIDE THIS WARNING LABEL TO THE RETAIL PURCHASER</b>
<b>NO WARRANTY POLICY</b> Due to the conditions under which they operate, <b>NITTO MAKES NO WARRANTIES (INCLUDING ANY WARRANTIES AS TO MERCHANTABILITY OR FITNESS), EITHER EXPRESSED OR IMPLIED</b> , with respect to Nitto Trail Grappler SxS tires and shall not be liable for any consequential or special damages arising from their use. <b>ALL NITTO TRAIL GRAPPLER SXS TIRES ARE SOLD "AS IS"</b> .
<b>⚠ CAUTION</b> <b>NITTO TRAIL GRAPPLER SXS TIRES ARE DESIGNED AND COMPOUNDED SOLELY FOR RECREATIONAL AND OFF ROAD USE AND ARE NOT TESTED OR LABELED IN ACCORDANCE WITH ANY GOVERNMENTAL STANDARD, INCLUDING FMVSS 119.</b> It is therefore dangerous and illegal to use these tires on public roads, and they should never be sold or used for that purpose. Any person that sells, distributes, or purchases Nitto Trail Grappler SxS tires for use on public roads does so at their own risk, and agrees to indemnify and reimburse Nitto for all losses, damage, or liability that Nitto may as a result suffer.
<b>⚠ CAUTION</b> <b>RECOMMENDATIONS ON THE PROPER USE AND HANDLING OF THIS TIRE IN COLDER CLIMATES</b> <b>CAUTION!</b> The rubber compounds used in this tire have unique properties that, when compared to other tires, can cause them to lose some of their flexibility when used or handled in conditions below 15°F (-9°C). This loss in flexibility can lead to potential cracking and other damage to the tire. <b>TO MINIMIZE THE CHANCES OF THIS HAPPENING, CONSUMERS AND INSTALLERS ARE ADVISED TO FOLLOW THESE INSTRUCTIONS:</b> 1. Do not move or operate the vehicle with these tires in conditions below 15°F (-9°C). <b>ALWAYS INSPECT TIRES FOR SIGNS OF CRACKING! NEVER USE TIRES THAT HAVE CRACKED!</b> 2. Avoid moving tires in conditions below 15°F (-9°C). 3. Before mounting or dismounting, store these tires for at least 24 hours in a temperature-controlled environment of 68°F (20°C) or warmer, and <b>ALWAYS INSPECT FOR SIGNS OF CRACKING! NEVER USE TIRES THAT HAVE CRACKED!</b> 4. Remove these tires from the vehicle and deflate to half the normal air pressure during prolonged periods of non-use or storage.
<b>⚠ WARNING</b>  <b>ROLLOVER HAZARD</b> FAILURE TO PROPERLY OPERATE YOUR VEHICLE MAY RESULT IN COLLISION, LOSS OF CONTROL, OR ROLLOVER, RESULTING IN SERIOUS INJURY OR DEATH. Drive with extreme caution until you become familiar with how your vehicle handles. Turning improperly could cause loss of traction, loss of control, accident or rollover. Avoid sharp turns. Never turn while applying heavy throttle. Never make abrupt steering maneuvers. Larger-diameter tires and/or modified suspensions alter vehicle handling and have an increased risk of rollover and/or occupant ejection. Slower speeds may be required to maintain control and your braking distance may increase. Some modifications may be illegal in your state. Consult your vehicle Owner's Manual, the instructions for this product, and state law before modifying your vehicle. Improper tire pressure or overloading can cause loss of control resulting in serious injury or death. Always wear your seat belt and proper safety equipment when operating the vehicle. Consult the vehicle Owner's Manual for safety recommendations. <b>NOT ADHERING TO THESE WARNINGS MAY RESULT IN LOSS OF VEHICLE CONTROL AND SERIOUS PERSONAL INJURY OR DEATH.</b>

# Tire Safety

## ⚠ WARNING

### **Tires must never be operated in excess of their rated speed limit!**

Exceeding the tire's speed capability will cause overheating of the tire and sudden tire failure, possibly leading to loss of vehicle control. All Nitto passenger and light truck tires have a maximum speed rating depending on size and type. Consult your tire dealer or contact Nitto at 888-529-8200 if you are not sure about the maximum speed rating of your tires. Nitto Tire U.S.A. Inc. does not endorse the operation of any vehicle in an unsafe or unlawful manner. Obey all local speed limits. Tire speed ratings do not imply that a vehicle can be safely driven at the speed for which the tire is rated. Speed ratings are based on laboratory tests that relate to performance on the road, but are not applicable if tires are underinflated, overloaded, worn out, damaged, or altered.

## ⚠ WARNING

### **Use and Installation of Winter (Snow) Tires**

Winter driving presents special challenges for vehicle handling. The use of winter tires, studs, and/or chains, while improving snow traction performance, requires additional caution with regard to braking, cornering, and speed. The use of snow tires may reduce the vehicle's handling and braking capability. It is important to drive with care, not only on snow and ice, but on dry and wet roads as well. Nitto recommends that snow tires be installed in matched, sets of four. This also applies for studded winter tires. When snow tires of a lower speed rating compared to the original tires are installed, the vehicle's speed capability is reduced. Follow all recommendations in the vehicle owner's manual regarding the use of winter tires. Consult your tire dealer for more information regarding seasonal restrictions for stud usage.

## ⚠ WARNING

### **Proper Selection of Replacement Tires**

Replacement tires for any vehicle must be of a size, load range, and load capacity (by inflation) that are capable of supporting the load of the vehicle's originally installed (O.E.) tires. Failure to install tires with adequate load capacity will result in tire fatigue and sudden tire failure leading to possible loss of control or an accident.

**IMPORTANT!** Refer to the vehicle owner's manual for any specific safety advice regarding the application of replacement tires.

## ⚠ WARNING

### **Tire and Rim Matching**

**NEVER MOUNT 16" RIM DIAMETER TIRES ON A 16.5" DIAMETER RIM!** Any attempt to mount a 16" rim diameter tire on a 16.5" rim diameter will result in an explosion of the tire/rim assembly that can cause severe personal injury or death.

Prior to mounting any 16" rim diameter tires, always check the rim/wheel identification stamp to verify the correct rim diameter. Always check the tire size molded onto the sidewall. NEVER exceed 40 psi when seating the beads on rims.

Warning for additional sizes:

To avoid an explosion of the tire/rim assembly and personal injury or death:

- **Never attempt to mount 22" rim diameter tires on any 22.5" diameter rim!**
- **Never attempt to mount 24" rim diameter tires on any 24.5" diameter rim!**

## ⚠ WARNING

### **Replacement Tires for Light Trucks – P-metric vs. LT-metric**

Tire installers should exercise extreme caution when replacing tires on light trucks. LT type tires (e.g. LT265/75R16) may not offer adequate load capacity when replacing P-metric type tires (e.g. P265/75R16), depending on the vehicle's load requirements and the tire's load/ply rating. **LT type tires require much higher air pressures to carry equivalent loads of P-metric tires.** If P-metric type tires are used to replace LT-metric tires, installers should verify the load requirement of the vehicle by checking the tire information placard. Always make sure that replacement tires offer equal or more load capacity (by inflation) compared to the originally installed tires.

If P-metric, or metric tires are intended to replace originally installed LT type tires, the load capacity of the P-metric tire is reduced by 9% at any inflation value. Consult manufacturer's load and inflation charts. Contact Nitto Consumer Relation with any tire replacement questions: 888-529-8200 (Pacific Time).



## **⚠ DANGER**

Always stand well clear of any tire mounting operation. This is especially important when the service operator inflates the tire. If the tire has been improperly mounted, it may burst with explosive force causing serious personal injury or death.

**A new valve must be installed on the rim each time a worn out passenger or light truck tire is replaced.**

## **⚠ DANGER**

Removing and replacing tires on wheels can be dangerous. Attempting to mount tires with improper tools or procedures may result in a tire explosion causing serious injury or death. This is a job for your authorized Nitto® dealer or other qualified tire service location only.

## **⚠ DANGER**

**NOTE TO PROFESSIONAL TIRE INSTALLERS:** Exceeding the maximum bead seating pressure. The tire service person must **NEVER** INFLATE BEYOND 40 POUNDS PRESSURE TO SEAT BEADS unless specified by the tire manufacturer! **NEVER STAND, LEAN OR REACH OVER THE ASSEMBLY DURING INFLATION!**

### **\*\*IF Replacing Less Than Four (4) Tires\*\***

IMPORTANT!

In some cases, the vehicle manufacturer may specifically advise against replacing less than all four tires. Always check and follow the recommendations in the vehicle owner's manual. For 4WD and AWD vehicles, even small differences in outside diameter may cause drive-train damage or mechanical malfunction.

When replacing tires on a vehicle, it is recommended and preferred that all four tires be replaced at the same time for continued optimal vehicle performance. However, for those cases where this is not feasible, below are some general guidelines to consider when replacing less than four tires for a light vehicle, whether it is one or two tires. If the vehicle manufacturer has alternate recommendations, always follow their recommendations.

**REPLACING TWO (2) TIRES** - When a pair of replacement tires is selected in the same size and construction as those on the vehicle, the two newer tires must be installed on the rear axle. All tires must be the same speed rating and must be of equal or higher speed rating than the tire that came as original equipment on the vehicle. New tires with deeper tread will provide better grip and evacuate water more effectively, which is important as a driver approaches (wet) hydroplaning situations. Placing greater traction on the rear axle on wet surfaces is necessary to prevent a possible oversteer condition and loss of vehicle stability and control.

**REPLACING ONE (1) TIRE** - Replacing a single tire on a vehicle can have an adverse effect on suspension systems, gear ratios, transmission, and tire treadwear. If single tire replacement is unavoidable, it is recommended that the single new tire be paired with the tire that has the deepest tread depth and both be placed on the rear axle. Placing greater traction on the rear axle on wet surfaces is necessary to prevent a possible oversteer condition and loss of vehicle stability and control.

## Consumer Safety Advisory for Lifted Light Trucks

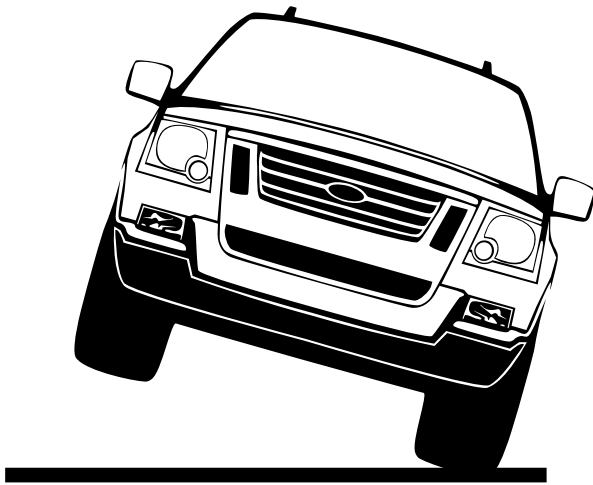
# Rollover Propensity of Lifted Light Trucks

### WARNING

Consumers should be aware that the installation of larger diameter tires, including off-road type tires, combined with modified suspensions (lift kits) for increased off-road ground clearance will adversely affect the handling and maneuverability characteristics of the vehicle compared to the factory-equipped (original) vehicle.

When vehicles, especially light trucks, are lifted, the center of gravity is heightened, thus making them more prone to rollover. Rollover propensity is further increased with full passenger and/or cargo loads. Other aspects of handling and maneuverability may also be affected by altering the original manufacturer's design.

As with any vehicle, **extreme care must be used to prevent loss of control or rollover during sharp turns or abrupt maneuvers.**



Always wear seat belts and drive safely, recognizing that reduced speeds and special driving techniques may be required.

**The installation of larger tire and wheel combinations will reduce the effectiveness of anti-lock braking systems and increase stopping distance.**

**Failure to safely drive any vehicle equipped with a lift kit may result in an accident resulting in serious injury or death.**

Do not drive a lifted vehicle unless you are familiar with its unique handling characteristics and are confident of your ability to maintain control under all driving conditions. Some modifications (and combinations of modifications) are not recommended and may not be permitted in your state.

Consult your owner's manual, the instructions accompanying the lift kit, and state laws before undertaking any vehicle suspension modifications.

**You are responsible for the legality and safety of the vehicle you modify using lift kit and tire modifications.**

NTSD-12-009

April 19, 2021

## Recommendations on the Proper Use and Handling of Certain Nitto® Tires

This advisory supersedes NTSD-09-002, dated October 2, 2009, and applies only to the following products:

**All NT555®R All NT555®R11 All NT01™ All NT05®R  
NT555®G2 (Sizes with U.T.Q.G. 200AA A)  
NT05® (Sizes with U.T.Q.G. 140AA A)  
Trail Grappler® SxS**

This advisory addresses the proper use and handling of these tires in colder climates. Tires exposed to temperatures below 15°F (-9°C) will lose rubber compound flexibility. Under certain conditions, it may even experience cracking (see image below).



The rubber compounds used in these tires have unique properties that, when compared to other tires, can cause them to lose some of their flexibility when used or handled in conditions below 15°F (-9°C). This loss in flexibility can lead to potential cracking and other damage to the tire.

### **TO MINIMIZE THE CHANCES OF THIS HAPPENING, CONSUMERS AND INSTALLERS ARE ADVISED TO FOLLOW THESE INSTRUCTIONS:**

1. Do not move or operate the car with these tires in conditions below 15°F (-9°C). **ALWAYS INSPECT FOR SIGNS OF CRACKING! NEVER USE TIRES THAT HAVE CRACKED!**
2. Avoid moving these tires in conditions below 15°F (-9°C).
3. Before mounting or dismounting, store these tires for at least 24 hours in a temperature-controlled environment of 68°F (20°C) or warmer, and **ALWAYS INSPECT FOR SIGNS OF CRACKING! NEVER USE TIRES THAT HAVE CRACKED!**
4. Remove these tires from the vehicle and deflate to half the normal air pressure during prolonged periods of non-use or storage.

For more information, please contact Nitto Tire U.S.A. Inc.'s Consumer Relations Department at (888) 529-8200.

**Nitto Tire U.S.A., Inc.**  
PO Box 6064  
Cypress, CA 90630  
[www.nittotire.com](http://www.nittotire.com)

04/2021

Item No. 12-009

## Load Capacity of Nitto® NT05R™ and NT555®R11 Tires

Nitto Tire U.S.A. Inc. is introducing the following sizes in the NT05R™ and NT555®R11 Drag Radial product line that are designed using the Light Load (LL) standard of the Tire and Rim Association (T.R.A.);

P275/40R17 P305/45R18

P305/45R17 P315/40R18

P315/35R17 P335/30R18

P275/40R18 P345/30R19

P285/40R18 P315/35R20

### Load Identification

Under the T.R.A.'s designation, tire load is divided into three categories: Light Load (LL), Standard Load (SL), and Extra Load (XL). Each refers to the tire's ability to carry a certain load at a given air pressure. Tires designed for LL, SL, XL duty are usually identified as such on the sidewall.



Figure 1 – Light Load molded into sidewall

**⚠ CAUTION**

**CAUTION!** A Light Load tire carries less load at the same inflation pressure as a standard load tire and has a lower maximum load capacity than the equivalent standard load size. Figure 2 below shows the different load capacities of the three different categories of tires of the same size.

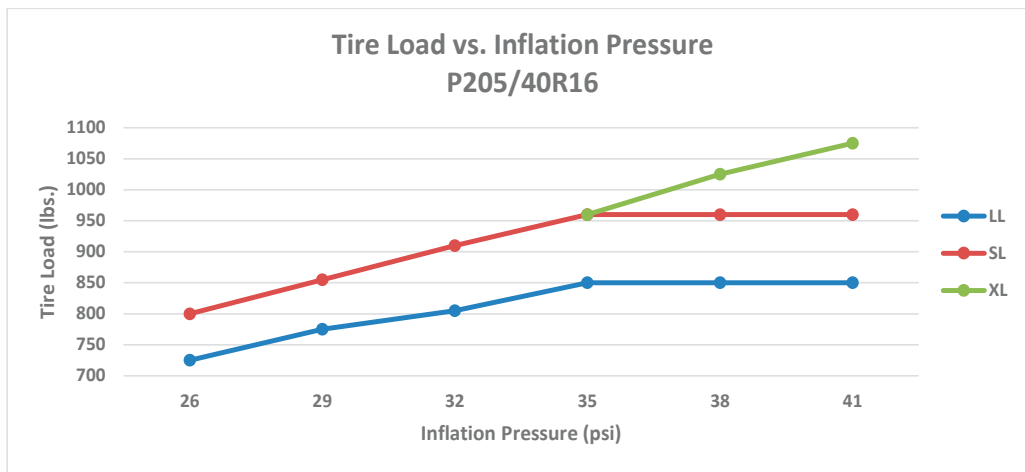


Figure 2 – Tire Load vs. Inflation Chart

**General Advice for Determining Correct Inflation Pressure:**

“Plus size” tires, including subject tires, may require higher inflation pressures than what is indicated on the vehicle Tire Information Placard or in the vehicle Owner’s Manual. Any “plus size” tire should be inflated to a pressure that provides equal or greater load capacity compared to the original equipment (O.E.) tire. Always refer to tire industry load & inflation tables to determine correct inflation values when installing “plus sizes”, or contact Nitto Tire for assistance.

**! WARNING**

**Always observe this advice to avoid overloading the tire. Tire overload will contribute to tire fatigue and could lead to tire failure. Tire failure may lead to an accident, which may result in injury or death.**

Single Load per tire in pounds:

Size		Tire Load Limit at Various Cold Inflation Pressures					
		PSI	26	29	32	35	36
P275/40R17	93LL	lbs.	1,235	1,301	1,367	1,433	
P305/45R17	102LL	lbs.	1,609	1,698	1,775	1,874	
P315/35R17	93LL	lbs.	1,246	1,323	1,378	1,433	
P275/40R18	94LL	lbs.	1,290	1,356	1,422	1,477	
P285/40R18	96LL	lbs.	1,367	1,444	1,510	1,565	
P305/45R18	103LL	lbs.	1,554	1,664	1,775	1,874	1,929
P315/40R18	102LL	lbs.	1,620	1,709	1,786	1,874	
P335/30R18	95LL	lbs.	1,312	1,378	1,444	1,521	
P345/30R19	98LL	lbs.	1,433	1,510	1,587	1,653	
P315/35R20	97LL	lbs.	1,301	1,389	1,477	1,565	1,609

Figure 3 – T.R.A. Load & Inflation Table

*Load and inflation tables are published by The Tire and Rim Association, Inc. 175 Montrose West Ave., Suite 150, Copley, Ohio 44321.*

For more information, please contact Nitto Tire U.S.A. Inc.’s Consumer Relations Department at (888) 529-8200.

**Nitto Tire U.S.A Inc.**  
**PO Box 6064**  
**Cypress, CA 90630**  
**www.nittotire.com**

## Tire Inflation: Multipurpose Passenger Vehicles

This bulletin supersedes all prior Nitto publications related to tire inflation for multipurpose passenger vehicles, including recreational vehicles. The purpose of this bulletin is to disseminate Nitto's recommendation and policy regarding inflation and tire maintenance of original equipment tires and direct replacement tires (same size and load range) on multipurpose passenger vehicles.

For the purpose of this bulletin, multipurpose passenger vehicles include all vehicles equipped with LT designated tires or medium duty truck tires. Multipurpose passenger vehicles include **recreational vehicles (including class A, C, and B RVs), buses, and EMS (emergency medical service) vehicles.**

### Inflation of Original Equipment Tires on Multipurpose Passenger Vehicles:

Nitto's policy is to maintain the pressure specified on the vehicle's tire information placard (certification label) as established by the vehicle manufacturer or final stage manufacturer.

Replacement tires must also be capable of supporting no less than the vehicle's GAWR (per axle).

### Tire Inflation and GAWR Information:

The vehicle's *tire information placard (certification label)* includes information regarding the tire size, inflation, GAWR and other information. The tire information placard is usually located on the driver's door hinge pillar, door latch post, or the door edge. In RVs the tire information placard is placed on the bulkhead at the left of the driver's seating position.

### Example – Tire Information Placard (Certification label):



## Applicable Federal Motor Vehicle Safety Standards

Federal Motor Vehicle Safety standard (FMVSS 571.120) requires the following of vehicle manufacturers in applying original tires to vehicles:

**The sum of the maximum load ratings of the tires fitted to an axle shall not be less than the gross axle weight rating (GAWR) of the axle system as specified on the vehicle's certification label (tire information placard).**

Consequently, vehicle manufacturers are required by federal regulations to apply tires of a sufficient size, load range, and load capacity (by inflation) to support no less than the GAWR.

### GAWR Definition:

The maximum allowable weight the axle assembly is designed to support as determined by the vehicle manufacturer. This includes both the weight of the axle and the portion of the vehicle's weight carried by the axle.

### GVWR Definition:

The maximum permissible weight of the vehicle, including the unloaded vehicle weight plus all fluids, cargo, passengers, optional equipment and accessories. For safety and product performance, **do not exceed the GVWR.**

### Checking Loaded Axle Weights & Load Distribution:

Consumers should make themselves aware of the loaded weight on each axle and wheel position of their vehicle and achieve as equal distribution of side-to-side weight as possible by redistributing cargo or payload as required. This can be determined by weighing each wheel position of the vehicle on a public scale. In any case where vehicle axle loads exceed the loads stated on the vehicle placard, all attempts should be made to reduce the vehicle's weight prior to driving. **A vehicle must never be operated when the loaded weight of any axle exceeds the GAWR, nor should any vehicle be operated when the actual loaded weight exceeds the gross vehicle weight rating (GVWR).**

### Tire Inspection & Tire Rotation:

The practice of rotating tires on multi-purpose vehicles should take into consideration any past under-inflation of tires. **Any tire that has been run under-inflated for any length of time may have become dangerously fatigued (damaged internally), and subject to sudden failure.** The term 'under-inflation' may be defined as the operation of any tire below an inflation level required to support the tire's actual load (according to tire load & inflation charts). Nitto recommends that any tire that was known or suspected of being run under-inflated or overloaded should be dismantled and fully inspected by a qualified tire professional for any damage or indications of fatigue before being rotated or returned to service.

### Tire Damage and Aging (noncommercial use):

Vehicle operating conditions and tire maintenance practices vary widely. Tires should be routinely checked for damage or signs of fatigue or aging. This should be done at scheduled vehicle maintenance intervals and preferably on a lift so that the tires can be thoroughly inspected by a tire professional.

### Reducing Inflation Pressure – Vehicle Certification Label:

**Under no circumstances should the tire inflation pressure be reduced below that stated on the vehicle's tire information (certification) placard to achieve improvements in ride comfort.** If you do not know where the tire information placard is, contact your vehicle manufacturer for its location and tire inflation recommendation. For RVs, the certification label is usually placed on the wall or bulkhead to the left of the driver's position.

### Air Compressor Capacity:

For vehicles equipped with air compressors: Some compressors may not be capable of inflating the tire to the required inflation pressure. In this case, consumers should take their vehicle to a retail tire shop or commercial vehicle repair shop with a higher capacity air compressor.

### Check Cold Tire Inflation Pressure Prior to Driving:

The cold tire inflation pressures of each wheel should be checked at least once per week and any corrections in cold tire inflation pressure should be made prior to a trip. "Cold" means that the tires are at the same temperature as the surrounding air, such as when the vehicle has been parked overnight. Never bleed air from a tire that has been run. It is normal for a tire's inflation pressure to increase (hot inflation pressure) after running (for example 30 minutes or more driving time).

### **Tire Air Pressure Loss:**

All tires lose air at the rate of 1 – 1.5 PSI per month due to natural permeation of the air through the tire's rubber membrane. Always check the cold inflation pressure of any vehicle that has not been driven for several weeks and re-inflate the tires to the placard pressure before driving.

Tire pressure is affected by the ambient temperature to the extent of approximately 1 PSI per 10 degree (F) change in temperature. As an example, a 20 degree (F) drop in temperature will result in a 2 PSI drop. A 20 degree (F) increase in ambient temperature will result in a 2 PSI increase. As ambient temperatures drop, tire pressures should be checked and the air pressures increased as required.

Aside from tire pressure fluctuations due to ambient temperature, any unexplained air loss, such as 1 PSI or more per week should be investigated for the cause(s), such as a nail puncture, leaking valve stem, etc., and corrected prior to driving.

### **Driving Speed – Tire Fatigue:**

Tires designated as 'LT' tires and medium duty truck tires have less resistance to heat build-up compared with passenger tires, and are more susceptible to internal damage and fatigue if they are run under-inflated, overloaded, or in excess of their (rated) speed capability. **Driving at sustained high speeds with under-inflated and/or overloaded tires may lead to immediate tire failure.** Driving in excess of the tire's speed capability – even if properly inflated – may result in sudden tire failure. **Consult the tire manufacturer regarding the speed limitation of the size and type tire you are using.** It is the driver's responsibility not to exceed posted speed limits.

### **FAQ for Tire Inflation on Multipurpose Vehicles:**

- Q:** If my tire and axle loads are below the vehicle's GAWR, can Nitto recommend a more suitable air pressure than that shown on the vehicle's tire information placard?
- A:** No. The vehicle's placard pressure will provide some measure of air pressure "reserve" over that required for the actual load, thus providing a safety margin.
- Q:** What if the vehicle's certification placard inflation pressure is too high or low?
- A:** The vehicle's certification placard inflation is not determined at the whim of the vehicle manufacturer. It is established in accordance with Federal Motor Vehicle Safety Standards (FMVSS 571.120) that require the tire size, load range and load capacity (by inflation) shall provide load capacity not less than the vehicle's gross axle weight rating (GAWR). Although vehicle manufacturers must comply with this regulation, some originally installed tires may require higher or lower placard pressures depending on the size, load range, and load capacity of the tire.
- Q:** What are the consequences of inflating the tires to accommodate the actual loads?
- A:** If the inflation pressure corresponds to the actual tire load according to the tire manufacturer's load and pressure table, the tire will be running at 100% of its rated load at that pressure. This practice may not provide a sufficient safety margin. Any air pressure loss below the minimum required to carry the load can result in eventual tire failure.

**Nitto Tire U.S.A. Inc.**  
**P.O. Box 6064**  
**Cypress, California 90630 - 6064**  
**Nitto Technical Services: (888) 529-8200 Pacific Time**  
**www.nittotire.com**



**NOTES:**

---

**NOTES:**

**NOTES:**

---



**NITTO**

FUELED BY ENTHUSIASTS®

NITTOTIRE.COM

FOLLOW US



TDLKK23-050

All technical information subject  
to change without notice.

© 2024 Nitto Tire U.S.A. Inc.

NITTO TIRE U.S.A. Inc.  
3565 Harbor Blvd.  
Costa Mesa, CA 92626  
888.529.8200